



PRODUCT CATALOG
PRICING | U.S. VERSION



In 1998, Founders David and Bianca Lisonbee embarked on a journey to bring phenomenal 4Life Transfer Factor® products to the world. Unlike common supplements you find in health food stores, transfer factors aren't vitamins, minerals, or herbs. Instead, they're messenger molecules that transfer immune system memory and knowledge from one entity to another. Here at 4Life, we focus on the immune system, because when you feel your best, you can be your best.*

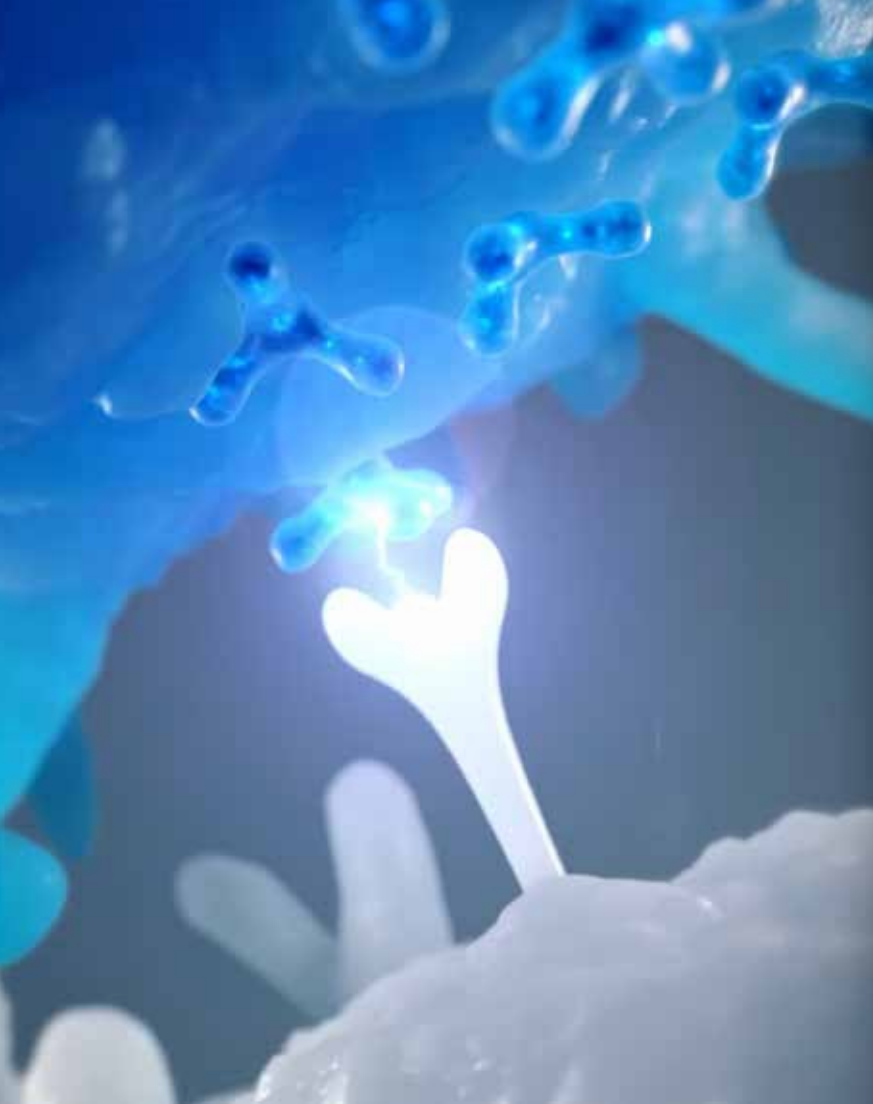
The introduction of 4Life Transfer Factor opened the door for further research, patented techniques, and a new category of immune system products that support health in a different way—by the immune system, for the immune system. Our in-house Quality department, which is comprised of scientists and medical professionals, continually raises the standard

for modern-day immune system supplementation and ensures the cutting-edge quality of our products.*

Because of our deep commitment to quality, excellence, and scientific innovation, we certify every 4Life Transfer Factor product we sell. In our state-of-the-art, million-dollar testing lab, we conduct hundreds of tests per product to ensure identity, purity, strength, and composition. Many products undergo additional, rigorous quality-assurance tests before we release them for distribution.

4Life is The Immune System Company®, and our products are the foundation and heart of our business. We strive to create products that meet and exceed the highest standards so you can feel confident incorporating them into your health routine and sharing them with your friends and loved ones. Your immune system and overall wellness are in good hands with our science-backed products.*





Transfer factors are messenger molecules that transfer immune system information from one organism to another.*

*THESE STATEMENTS HAVE NOT BEEN EVALUATED BY THE FOOD AND DRUG ADMINISTRATION. THESE PRODUCTS ARE NOT INTENDED TO DIAGNOSE, TREAT, CURE, OR PREVENT ANY DISEASE.

Content

IMMUNE SYSTEM

| | |
|--|----|
| RiteStart Women | 36 |
| RiteStart Men | 37 |
| RiteStart Kids & Teens | 38 |
| 4Life Transfer Factor Plus Tri-Factor Formula | 14 |
| 4Life Transfer Factor Tri-Factor Formula | 15 |
| Pre/o Biotics | 43 |
| 4Life Transfer Factor RioVida Tri-Factor Formula | 32 |
| 4Life Transfer Factor RioVida Burst Tri-Factor Formula | 33 |
| 4Life Transfer Factor RioVida Chews Tri-Factor Formula | 33 |
| 4Life Transfer Factor RioVida Stix Tri-Factor Formula | 32 |
| 4Life Transfer Factor Chewable Tri-Factor Formula | 15 |
| 4Life Transfer Factor Immune Boost | 19 |
| Life C Chewable | 79 |
| Fortified Colostrum | 78 |
| Zinc Factor | 61 |
| 4Life Transfer Factor Renuvo | 52 |
| Pro-TF Protein | 50 |
| NutraStart Blue Vanilla | 39 |
| 4Life Transfer Factor Classic | 16 |
| 4Life NanoFactor Glutamine Prime | 28 |
| 4Life Transfer Factor Immune Spray | 17 |

ANTIOXIDANT SUPPORT

| | |
|--|----|
| 4Life Transfer Factor RioVida Tri-Factor Formula | 32 |
| 4Life Transfer Factor RioVida Burst Tri-Factor Formula | 33 |
| 4Life Transfer Factor RioVida Chews Tri-Factor Formula | 33 |
| 4Life Transfer Factor RioVida Stix Tri-Factor Formula | 32 |
| RiteStart Women | 36 |
| RiteStart Men | 37 |
| 4Life Transfer Factor Renuvo | 52 |

BRAIN HEALTH

| | |
|---------------------------------|----|
| 4Life Transfer Factor ReCall | 25 |
| 4Life Transfer Factor Reflexion | 25 |
| Gold Factor | 61 |
| Essential Fatty Acid Complex | 75 |
| 4LifeTransform PreZoom | 51 |

CLEANSING & DETOX

| | |
|-------------------|----|
| Fibre System Plus | 45 |
| Super Detox | 44 |
| Tea4Life | 45 |
| PhytoLax | 46 |

DIGESTIVE HEALTH

| | |
|--------------------------|----|
| Pre/o Biotics | 43 |
| Digestive Enzymes | 46 |
| Aloe Vera Stix | 44 |
| Fibre System Plus | 45 |
| Super Detox | 44 |
| Tea4Life | 45 |
| Digest4Life Reset System | 42 |
| PhytoLax | 46 |
| Fortified Colostrum | 78 |

ENERGY

| | |
|------------------------|----|
| 4LifeTransform PreZoom | 51 |
| Energy Go Stix | 58 |

EYE HEALTH

| | |
|-----------------------------|----|
| 4Life Transfer Factor Vista | 27 |
|-----------------------------|----|

FEMALE HEALTH

| | |
|---------------------------------|----|
| 4Life Transfer Factor Belle Vie | 29 |
| 4LifeTransform Woman | 53 |
| RiteStart Women | 36 |
| BioGenistein Ultra | 74 |

GLUCOSE METABOLISM

| | |
|--------------------------------|----|
| 4Life Transfer Factor Glucoach | 28 |
| Gurmar | 78 |

HEALTHY AGING

| | |
|--|----|
| 4Life Transfer Factor AgePro | 22 |
| Gold Factor | 61 |
| RiteStart Women | 36 |
| RiteStart Men | 37 |
| 4Life Transfer Factor Renuvo | 52 |
| 4Life Transfer Factor Collagen | 24 |
| 4Life Transfer Factor Collagen Type I | 24 |
| 4LifeTransform Woman | 53 |
| 4LifeTransform Man | 53 |
| Pro-TF Protein | 50 |
| 4Life Transfer Factor RioVida Tri-Factor Formula | 32 |
| 4Life Transfer Factor RioVida Burst Tri-Factor Formula | 33 |
| 4Life Transfer Factor RioVida Stix Tri-Factor Formula | 32 |
| 4Life Transfer Factor RioVida Chews Tri-Factor Formula | 33 |
| Essential Fatty Acid Complex | 75 |

LUNG/RESPIRATORY HEALTH

| | |
|----------------------------|----|
| 4Life Transfer Factor Lung | 26 |
|----------------------------|----|

CARDIOVASCULAR HEALTH

| | |
|---|----|
| 4Life Transfer Factor Cardio - <i>NEW FORMULA</i> | 23 |
|---|----|

MALE HEALTH

| | |
|-------------------------------|----|
| 4Life Transfer Factor MalePro | 29 |
| 4LifeTransform Man | 53 |
| RiteStart Men | 37 |

MULTIVITAMIN & MINERAL

| | |
|-------------------------|----|
| RiteStart Women | 36 |
| RiteStart Men | 37 |
| RiteStart Kids & Teens | 38 |
| NutraStart Blue Vanilla | 39 |
| Multiplex | 80 |
| Life C Chewable | 79 |

MUSCLE, BONE, & JOINT HEALTH

| | |
|--------------------------------|----|
| Flex4Life capsules | 76 |
| 4Life Transfer Factor Collagen | 24 |
| Fibro AMJ Day-Time Formula | 75 |
| RiteStart Women | 36 |
| RiteStart Men | 37 |
| Pro-TF Protein | 50 |
| 4LifeTransform Protein Bar | 51 |
| Cal-Mag Complex | 74 |
| MusculoSkeletal Formula | 79 |

ORAL HYGIENE

| | |
|-------------------|----|
| enummi Toothpaste | 70 |
|-------------------|----|

OVERALL WELLNESS

| | |
|-----------------|----|
| RiteStart Women | 36 |
| RiteStart Men | 37 |
| Gold Factor | 61 |

| | |
|--|----|
| 4Life Transfer Factor Renuvo | 52 |
| 4Life Transfer Factor Plus Tri-Factor Formula | 14 |
| 4Life Transfer Factor Tri-Factor Formula | 15 |
| 4Life Transfer Factor RioVida Tri-Factor Formula | 32 |
| 4Life Transfer Factor RioVida Burst Tri-Factor Formula | 33 |
| 4Life Transfer Factor RioVida Stix Tri-Factor Formula | 32 |
| 4Life Transfer Factor Chewable Tri-Factor Formula | 15 |
| 4Life Transfer Factor RioVida Chews Tri-Factor Formula | 33 |
| 4Life Transfer Factor Classic | 16 |
| 4Life Transfer Factor Immune Boost | 19 |
| RiteStart Kids & Teens | 38 |
| 4Life NanoFactor Glutamine Prime | 28 |
| NutraStart Blue Vanilla | 39 |
| Multiplex | 80 |
| 4Life Fortify | 81 |

SKIN HEALTH & BEAUTY

| | |
|---------------------------------------|----|
| äKwä Oil-to-Foam Cleanser | 64 |
| äKwä Eye Cream | 66 |
| äKwä Four-Way Toner | 65 |
| äKwä Volcanic Mud Mask | 64 |
| äKwä Vitamin Essence | 65 |
| äKwä Sheet Mask | 66 |
| äKwä Moisture Cream | 66 |
| äKwä SPF 30 Moisturizing Sunscreen | 65 |
| äKwä Skincare System | 67 |
| 4Life Transfer Factor Collagen | 24 |
| 4Life Transfer Factor Collagen Type I | 24 |
| enummi Body Lotion | 70 |
| 4Life Transfer Factor RenewAll | 17 |

| | |
|--------------------|----|
| enummi Shampoo | 71 |
| enummi Conditioner | 71 |
| enummi Body Wash | 71 |

SLEEP, MOOD, & STRESS

| | |
|--|----|
| 4Life Transfer Factor Reflexion | 25 |
| 4Life Transfer Factor SleepRite Stress Formula | 25 |
| | 80 |

THYROID HEALTH

| | |
|----------------------------------|----|
| 4Life Transfer Factor Metabolite | 27 |
|----------------------------------|----|

URINARY HEALTH

| | |
|---------------------------|----|
| 4Life Transfer Factor KBU | 26 |
|---------------------------|----|

WEIGHT MANAGEMENT

| | |
|---|----|
| 4LifeTransform Get Burning Pack for Women | 54 |
| 4LifeTransform Get Burning Pack for Men | 54 |
| 4LifeTransform Lean and Fit* Pack for Women | 55 |
| 4LifeTransform Shred* Pack for Men | 55 |
| 4LifeTransform Burn | 52 |
| Pro-TF Protein | 50 |
| 4LifeTransform PreZoom | 51 |
| NutraStart Blue Vanilla | 39 |
| ShapeRite | 52 |
| 4LifeTransform Protein Bar | 51 |

*THESE STATEMENTS HAVE NOT BEEN EVALUATED BY THE FOOD AND DRUG ADMINISTRATION. THESE PRODUCTS ARE NOT INTENDED TO DIAGNOSE, TREAT, CURE, OR PREVENT ANY DISEASE.

Meet Our Flagship Products!

These products are here to bolster and balance your immune system. Try the very best from The Immune System Company.*





*THESE STATEMENTS HAVE NOT BEEN EVALUATED BY THE FOOD AND DRUG ADMINISTRATION. THESE PRODUCTS ARE NOT INTENDED TO DIAGNOSE, TREAT, CURE, OR PREVENT ANY DISEASE.



A person's arm is visible on the left side of the frame, reaching out towards the center. The background is a soft-focus field of tall grasses under a warm, golden sky, suggesting a sunset or sunrise. The overall mood is peaceful and natural.

Immune health
is at the core
of wellness.

Products you can trust

We want to introduce you to our star ingredient: 4Life Transfer Factor. Transfer factors are unlike any other ingredient; they aren't a vitamin, mineral, or herb. Rather, they are unique messenger molecules that educate and enhance the immune system. We source our transfer factors from cow colostrum and chicken egg yolks through proprietary processes. We partner with the National Dairy FARM Program and United Egg Producers to ensure our animals are treated well.*

Our products are manufactured in NSF certified facilities, which means they are held to the highest standards of cleanliness and safety.





“Transfer factors are a remarkable aspect of nature’s wisdom. They help your immune system recognize, respond to, and remember potential health threats.”*

– David Lisonbee
Founder and Chairman of the Board



*THESE STATEMENTS HAVE NOT BEEN EVALUATED BY THE FOOD AND DRUG ADMINISTRATION. THESE PRODUCTS ARE NOT INTENDED TO DIAGNOSE, TREAT, CURE, OR PREVENT ANY DISEASE.

Which 4Life Transfer Factor product is right for me?



The immune system is a complex network of cells with different functions. Recent independent laboratory studies show that core 4Life Transfer Factor products bolster Natural Killer (NK) cell activity in the presence of a health threat, while activating a variety of other immune system cells, such as B cells, T cells, and Macrophages.* Discover the unique benefits and qualities of our core 4Life Transfer Factor products and how they support the body's cellular defenses.*



[Scan here to learn more about
4Life Transfer Factor core products](#)

*P. Vieira-Brock, A. Anderson, B. Vaughan, and D. Vollmer. 2019. Method development for the analysis of PBMC-mediated killing of K562 cells by bovine colostrum and various fractions. Immunology 2019.

*Vetvicka V, Vetvickova J (2019) J Nutr Health Sci 6(3): 301 †Vetvicka V, Fernandez-Botran R (2020) Int Clin Pathol J. 8(1):1

4Life Transfer Factor Classic

Item# 24080 | Page 16

Immune system cell coverage: 1 type

■ **NK cells**

Our Classic formula provides foundational immune system support from UltraFactor and is a great introductory immune system product.*

Core ingredients: UltraFactor from cow colostrum



Serving size: three capsules

4Life Transfer Factor Tri-Factor Formula

Item# 24070 | Page 15

Immune system cell coverage: 3 types

■ **NK cells** ■ **T cells** ■ **B cells**

Tri-Factor Formula combines UltraFactor with OvoFactor for more broad-based immune system support. NanoFactor mini molecules also assist in immune system response coordination.*

Core ingredients: UltraFactor and NanoFactor from cow colostrum and OvoFactor from chicken egg yolks



Patent protected: Yes

Serving size: two capsules

4Life Transfer Factor Plus Tri-Factor Formula

Item# 24075 | Page 14

Immune system cell coverage: 4 types

■ **NK cells** ■ **T cells**

■ **B cells** ■ **Macrophages**

Transfer Factor Plus is our premier, cutting-edge immune system support product. It has all the benefits of Tri-Factor Formula, the added support of a super-mushroom blend, and zinc.*

Core ingredients: UltraFactor and NanoFactor from cow colostrum and OvoFactor from chicken egg yolks
Added ingredients: Zinc and a super-mushroom blend



Serving Size: two capsules

Our Highest Level of Immune System Support*



4Life Transfer Factor Plus Tri-Factor Formula

PRIMARY SUPPORT: Immune System,
Overall Wellness*

**4Life's top-selling product with
our most powerful immune
support ingredients***

- Supports the immune system's natural ability to recognize, respond to, and remember potential health threats*
- Supports four key immune system cell types: NK cells, T cells, B cells, and Macrophages**
- NSF contents certified

- Includes a super-mushroom blend: A proprietary blend of ingredients such as maitake mushrooms, shiitake mushrooms, cordyceps, and baker's yeast
- Includes zinc for additional immune system support*
- Includes UltraFactor®, OvoFactor®, and NanoFactor®—Tri-Factor Formula

| 60 vegetable capsules | Retail | Whsle | LP |
|-----------------------|--------|-------|----|
| Item# 24075 | \$82 | \$65 | 55 |

*P. Vieira-Brock, A. Andersen, B. Vaughan, and D. Vollmer. 2019. Method development for the analysis of PBMC-mediated killing of K562 cells by bovine colostrum and various fractions. Immunology 2019.

**Vetvicka V, Vetvickova J (2019) J Nutr Health Sci 6(3): 301

**Vetvicka V, Fernandez-Botran R (2020) Int Clin Pathol J. 8(1):1

Boost or Balance; Whatever Your **Immune System** Needs*



4Life Transfer Factor Tri-Factor Formula

PRIMARY SUPPORT: Immune System, Overall Wellness*

Support your immune system with transfer factors from cow colostrum and chicken egg yolks*

- Supports the immune system's natural ability to recognize, respond to, and remember potential health threats*
- Supports three key immune system cell types: NK cells, T cells, and B cells**
- Contains 600 mg of 4Life Transfer Factor, which is clinically proven to activate the immune system within two hours**
- Includes UltraFactor, OvoFactor, and NanoFactor—Tri-Factor Formula

| 60 vegetable capsules | Retail | Whsle | LP |
|-----------------------|--------|-------|----|
| Item# 24070 | \$62 | \$49 | 40 |



4Life Transfer Factor Chewable Tri-Factor Formula

PRIMARY SUPPORT: Immune System, Overall Wellness*

Support your immune system with all the benefits of Tri-Factor Formula in a delicious chewable tablet*

- Supports the immune system's natural ability to recognize, respond to, and remember potential health threats*
- Has a great citrus cream flavor
- Contains 600 mg of 4Life Transfer Factor, which is clinically proven to activate the immune system within two hours**
- Includes UltraFactor, OvoFactor, and NanoFactor—Tri-Factor Formula

| 90 tablets | Retail | Whsle | LP |
|-------------|--------|-------|----|
| Item# 24042 | \$63 | \$50 | 40 |

1. Clinical study on the rapid immune modulating effects of 600 mg of 4Life Transfer Factor Blend compared to placebo. G. Jensen, NIS Labs Report 058-006.

*THESE STATEMENTS HAVE NOT BEEN EVALUATED BY THE FOOD AND DRUG ADMINISTRATION. THESE PRODUCTS ARE NOT INTENDED TO DIAGNOSE, TREAT, CURE, OR PREVENT ANY DISEASE.

The Foundation of 4Life Immune System Support*



4Life Transfer Factor Classic

PRIMARY SUPPORT: Immune System,
Overall Wellness*

4Life's original immune support product*

- Supports the immune system's natural ability to recognize, respond to, and remember potential health threats*
- Supports NK cells—a key immune system cell type[†]
- Includes UltraFactor

| 90 capsules | Retail | Whsle | LP |
|-------------|--------|-------|----|
| Item# 24080 | \$57 | \$45 | 38 |

*P. Vieira-Brock, A. Andersen, B. Vaughan, and D. Vollmer. 2019. Method development for the analysis of PBMC-mediated killing of K562 cells by bovine colostrum and various fractions. Immunology 2019.

[†]Vetvicka V, Vetvickova J (2019) J Nutr Health Sci 6(3): 301

[†]Vetvicka V, Fernandez-Botran R (2020) Int Clin Pathol J. 8(1):1





4Life Transfer Factor Immune Spray

PRIMARY SUPPORT: Immune System*

Mouth and throat spray that combines UltraFactor and NanoFactor with colloidal silver, zinc, and more*

- Supports the immune system's natural ability to recognize, respond to, and remember potential health threats*
- Includes aloe vera and marshmallow
- Is available in fresh mint and orange flavors

| Mint (1.7 fl oz bottle) | Retail | Whsle | LP |
|---------------------------|--------|-------|----|
| Item# 24046 | \$37 | \$29 | 25 |
| Orange (1.7 fl oz bottle) | Retail | Whsle | LP |
| Item# 24044 | \$37 | \$29 | 25 |



4Life Transfer Factor RenewAll

Paraben-free skin gel

- Contains 4Life Transfer Factor
- Includes aloe vera, rosemary, chamomile, and lavender

| 2 oz tube | Retail | Whsle | LP |
|-------------|--------|-------|----|
| Item# 25041 | \$27 | \$21 | 17 |

*THESE STATEMENTS HAVE NOT BEEN EVALUATED BY THE FOOD AND DRUG ADMINISTRATION. THESE PRODUCTS ARE NOT INTENDED TO DIAGNOSE, TREAT, CURE, OR PREVENT ANY DISEASE.

4Life Transfer Factor
is clinically proven to
activate the immune
system within
two hours.*1





4Life Transfer Factor Immune Boost

PRIMARY SUPPORT: Immune System*

SECONDARY SUPPORT: Antioxidant*

Get fast-acting immune support when you don't have time to feel anything but your best*

- Supports a healthy immune system response*
- Contains 1,000 mg of vitamin C, which is more than you get from ten oranges
- Replenishes important electrolytes vital to wellness*
- Provides potent antioxidant support*
- Contains 1,000 mg of 4Life Transfer Factor, which is clinically proven to activate the immune system within two hours*¹
- Is a Titan Award recipient



| 5 powder packets | Retail | Whsle | LP |
|------------------|--------|-------|----|
| Item# 28136 | \$25 | \$20 | 15 |

1. Clinical study on the rapid immune modulating effects of 600 mg of 4Life Transfer Factor Blend compared to placebo. G. Jensen, NIS Labs Report 058-006.

***THESE STATEMENTS HAVE NOT BEEN EVALUATED BY THE FOOD AND DRUG ADMINISTRATION. THESE PRODUCTS ARE NOT INTENDED TO DIAGNOSE, TREAT, CURE, OR PREVENT ANY DISEASE.**

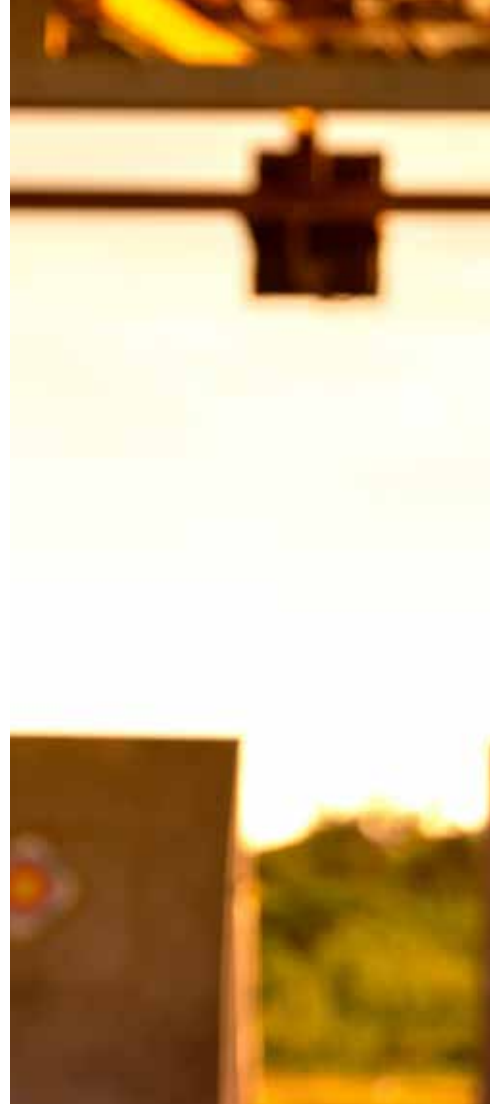
Targeted Transfer Factor[®]

Focused Support For Your Body's Needs*

Targeted Transfer Factor products combine the immune system benefits of 4Life Transfer Factor with system-specific nutrients to provide a focused and personal level of health support.*



Scan here to learn more about
4Life Targeted Transfer Factor products





*THESE STATEMENTS HAVE NOT BEEN EVALUATED BY THE FOOD AND DRUG ADMINISTRATION. THESE PRODUCTS ARE NOT INTENDED TO DIAGNOSE, TREAT, CURE, OR PREVENT ANY DISEASE.



4Life Transfer Factor AgePro

PRIMARY SUPPORT: Healthy Aging, Antioxidant*

SECONDARY SUPPORT: Overall Wellness, Immune System*

Reprogram the way you age with this proprietary formula*

- Supports healthy cellular aging*
- Increases NAD+ levels in the blood*
- Provides antioxidant support*
- Supports a healthy immune system*
- Is scientifically proven to extend lifespan and improve healthspan**
- Rejuvenates aging immune cells for a younger-acting immune system*
- Improves endurance performance*
- Targets the main pathways of biological aging*

| 60 vegetable capsules | Retail | Whsle | LP |
|-----------------------|--------|-------|----|
| Item# 28148 | \$75 | \$59 | 45 |

*These statements have not been evaluated by the Food and Drug Administration. These products are not intended to diagnose, treat, cure, or prevent any disease.
**In preclinical studies.

4Life Transfer Factor Cardio (New Formula)

PRIMARY SUPPORT: Cardiovascular Health,
Immune System*

SECONDARY SUPPORT: Antioxidant*

**Offers cardio-protective benefits by
reducing oxidative stress and modulating
inflammation response in a preclinical study***

- Features certified 4Life Transfer Factor to educate immune cells and strengthen the heart's first line of defense: the immune system*
- Supports heart health, cardiovascular function, and circulatory function*
- Provides a cellular defense against a low-quality diet and stressful lifestyle*
- Promotes antioxidant levels*

| 90 vegetable capsules | Retail | Whsle | LP |
|-----------------------|--------|-------|----|
| Item# 21010 | \$80 | \$63 | 52 |





4Life Transfer Factor Collagen (strawberry-mango)

PRIMARY SUPPORT: Healthy Aging, Skin Health & Beauty, Muscle & Joint Health*

SECONDARY SUPPORT: Immune System, Antioxidant*

Formula that features five types of collagen; 4Life Transfer Factor Tri-Factor Formula; vitamins A, C, and E; biotin; and our Age-Defying Collagen Complex*

- Provides total-body, healthy aging support with a refreshing strawberry-mango flavor*
- Helps replenish collagen levels to support healthy joints, muscles, and skin*
- Supports immune system function with 4Life Transfer Factor*
- Improves skin moisture and elasticity*

| 15 strawberry-mango powder packets | Retail | Whsle | LP |
|------------------------------------|--------|-------|----|
| Item# 25404 | \$51 | \$40 | 28 |



4Life Transfer Factor Collagen Type I (flavorless)

PRIMARY SUPPORT: Healthy Aging, Skin Health & Beauty, Muscle Health*

SECONDARY SUPPORT: Immune System, Antioxidant*

Non-flavored formula that features Type I collagen to support skin, nails, hair, antioxidant levels, and the immune system*

- Supports skin elasticity, moisture levels, skin tone, and skin repair*
- Helps replenish collagen levels to support healthy nails and hair*
- Supports immune system function with 4Life Transfer Factor*
- Provides antioxidant support*
- Supports joints and muscles*

| 15 flavorless powder packets | Retail | Whsle | LP |
|------------------------------|--------|-------|----|
| Item# 25417 | \$51 | \$40 | 28 |



4Life Transfer Factor SleepRite

PRIMARY SUPPORT: Sleep, Relaxation*

SECONDARY SUPPORT: Immune System*

Calms the mind and body, promotes better sleep, and supports the immune system*

- Helps you fall asleep more quickly and improves sleep quality*
- Supports body and mind balance*
- Educates the immune system*
- Is clinically researched

| | | | |
|--------------------|--------|-------|----|
| 60 capsules | Retail | Whsle | LP |
| Item# 28133 | \$42 | \$33 | 25 |



4Life Transfer Factor Reflexion

PRIMARY SUPPORT: Sleep, Mood, & Stress; Brain Health*

SECONDARY SUPPORT: Immune System*

Promotes relaxation, improved mood, and the ability to focus during occasional stress*

- Enhances your ability to cope with the daily stresses of life*
- Promotes relaxation, a positive mood, and the ability to focus*
- Supports the immune system's ability to function properly in times of occasional stress*
- Improves cognitive function*

| | | | |
|------------------------------|--------|-------|----|
| 60 vegetable capsules | Retail | Whsle | LP |
| Item# 22005 | \$66 | \$52 | 40 |



4Life Transfer Factor ReCall

PRIMARY SUPPORT: Brain Health*

SECONDARY SUPPORT: Immune System, Healthy Aging*

Targeted brain support for optimal mental functioning*

- Features certified 4Life Transfer Factor to educate immune system cells*
- Promotes healthy brain function with blood circulation support*
- Contains ingredients to support memory and brain health, like *Huperzia serrata*, *Bacopa monnieri*, and ginkgo biloba*

| | | | |
|--------------------|--------|-------|----|
| 90 capsules | Retail | Whsle | LP |
| Item# 22003 | \$70 | \$55 | 42 |





4Life Transfer Factor Lung

PRIMARY SUPPORT: Respiratory System*

SECONDARY SUPPORT: Immune System*

Targeted support for the lungs and overall respiratory function*

- Promotes proper respiratory function*
- Supports healthy lung tissue*
- Helps the body detox from air pollution damage*
- Supports your airway's natural defenses against pollution-based damage*
- Educates, enhances, and balances the immune system with our exclusive Tri-Factor Formula*

| 90 capsules | Retail | Whsle | LP |
|-------------|--------|-------|----|
| Item# 21501 | \$57 | \$45 | 33 |



4Life Transfer Factor KBU

PRIMARY SUPPORT: Urinary Health*

SECONDARY SUPPORT: Immune System, Antioxidant, Cleansing & Detox*

A targeted formula for both men and women to support the urinary tract, kidneys, and bladder*

- Features certified 4Life Transfer Factor to educate immune system cells*
- Supports the bladder with cleansing ingredients like dandelion, chanca piedra, varuna, and mannose*
- Supports healthy kidney and urinary tract function with cranberry, IP-6, dandelion, chanca piedra, and varuna*

| 120 capsules | Retail | Whsle | LP |
|--------------|--------|-------|----|
| Item# 25501 | \$67 | \$53 | 42 |



4Life Transfer Factor Vista

PRIMARY SUPPORT: Eye Health*
SECONDARY SUPPORT: Immune System, Antioxidant*

Targeted support for optimal vision performance and eye health*

- Helps maintain visual acuity and sharpness*
- Includes ingredients to help reduce the oxidative effects of the sun and excessive blue light exposure on the macula of the eyes*
- Promotes healthy eye function*
- Supports the eyes' ability to adapt to varying light conditions*
- Features certified 4Life Transfer Factor to educate immune system cells*

| 60 vegetable capsules | Retail | Whsle | LP |
|-----------------------|--------|-------|----|
| Item# 29501 | \$66 | \$52 | 40 |



4Life Transfer Factor Metabolite

PRIMARY SUPPORT: Thyroid Metabolism, Immune System*
SECONDARY SUPPORT: Post-Meal Metabolism, Weight Management*

Targeted support for healthy thyroid hormone metabolism and antioxidant levels*

- Supports healthy thyroid function*
- Moderates thyroid hormone production*
- Reduces post-meal oxidative stress*
- Provides antioxidants*
- Features 4Life Transfer Factor to support the immune system*

| 90 vegetable capsules | Retail | Whsle | LP |
|-----------------------|--------|-------|----|
| Item# 26001 | \$46 | \$36 | 28 |

*THESE STATEMENTS HAVE NOT BEEN EVALUATED BY THE FOOD AND DRUG ADMINISTRATION. THESE PRODUCTS ARE NOT INTENDED TO DIAGNOSE, TREAT, CURE, OR PREVENT ANY DISEASE.



4Life Transfer Factor Glucoach

PRIMARY SUPPORT: Glucose Metabolism*

SECONDARY SUPPORT: Immune System, Antioxidant*

Supports glucose levels and metabolism*

- Includes certified 4Life Transfer Factor to educate immune system cells*
- Includes minerals, herbs, and phytonutrients to support healthy glucose levels and promote pancreatic health*
- Supports the endocrine system*

| 120 capsules | Retail | Whsle | LP |
|--------------|--------|-------|----|
| Item# 29001 | \$80 | \$63 | 53 |



4Life NanoFactor Glutamine Prime

PRIMARY SUPPORT: Immune System, Overall Wellness*

SECONDARY SUPPORT: Energy, Antioxidant, Digestive Health*

Energy source that helps fuel immune system cell activity and provides the building blocks of glutathione: an important antioxidant*

- Supplies fuel to immune system cells with the important amino acid glutamine*
- Features NanoFactor to educate immune system cells*
- Provides synergistic immune system support when taken with other 4Life Transfer Factor products*

| 120 capsules | Retail | Whsle | LP |
|--------------|--------|-------|----|
| Item# 24087 | \$44 | \$35 | 27 |



4Life Transfer Factor Belle Vie

PRIMARY SUPPORT: Female Health*
SECONDARY SUPPORT: Immune System, Antioxidant*

Targeted support for female reproductive and breast health*

- Features certified 4Life Transfer Factor to educate immune system cells*
- Includes a blend of herbal antioxidants, phytoestrogens, indoles, and calcium d-glucarate to support female endocrine health*
- Promotes overall feminine reproductive health*

| | | | |
|--------------------|--------|-------|----|
| 60 capsules | Retail | Whsle | LP |
| Item# 22535 | \$66 | \$52 | 43 |



4Life Transfer Factor MalePro

PRIMARY SUPPORT: Male Health*
SECONDARY SUPPORT: Immune System, Antioxidant*

Targeted support for optimal prostate health*

- Features certified 4Life Transfer Factor to educate immune system cells*
- Includes saw palmetto, lycopene, isoflavones, broccoli extract, and antioxidants to support prostate health*

| | | | |
|--------------------|--------|-------|----|
| 90 softgels | Retail | Whsle | LP |
| Item# 22562 | \$76 | \$60 | 44 |

*THESE STATEMENTS HAVE NOT BEEN EVALUATED BY THE FOOD AND DRUG ADMINISTRATION. THESE PRODUCTS ARE NOT INTENDED TO DIAGNOSE, TREAT, CURE, OR PREVENT ANY DISEASE.

RioVida[®]

Energizing Antioxidants*

RioVida products feature a rush of mouthwatering ingredients, including antioxidant-rich superfruits and the power of 4Life Transfer Factor. These products are delicious, refreshing, energizing, and potent. Ride the river of life[®] with RioVida!



Scan here to learn more about
4Life Transfer Factor RioVida products





*THESE STATEMENTS HAVE NOT BEEN EVALUATED BY THE FOOD AND DRUG ADMINISTRATION. THESE PRODUCTS ARE NOT INTENDED TO DIAGNOSE, TREAT, CURE, OR PREVENT ANY DISEASE.

4Life Transfer Factor RioVida Tri-Factor Formula

PRIMARY SUPPORT: Immune System, Healthy Aging, Antioxidant, Overall Wellness*

SECONDARY SUPPORT: Brain Health, Heart Health, Energy*

The one-and-only liquid dietary supplement that combines 4Life Transfer Factor with antioxidant-rich superfruits*

- Supports the immune system's natural ability to recognize, respond to, and remember potential health threats with 600 mg of 4Life Transfer Factor per 1 fl oz serving*
- Contains 4Life Transfer Factor, which is clinically proven to activate the immune system within two hours**
- Includes a proprietary combination of antioxidant-rich natural fruit juices, including açai, pomegranate, blueberry, and elderberry*
- Contains 60 mg of vitamin C per 1 fl oz



4Life Transfer Factor RioVida Stix Tri-Factor Formula

PRIMARY SUPPORT: Immune System, Healthy Aging, Antioxidant, Overall Wellness*

SECONDARY SUPPORT: Brain Health, Heart Health, Energy*

The immune system goodness of RioVida in a portable powder packet*

- Supports the immune system with 600 mg of 4Life Transfer Factor per serving*
- Contains 4Life Transfer Factor, which is clinically proven to activate the immune system within two hours**
- Delivers essential antioxidants from açai, pomegranate, and blueberry*
- Is portable and easy to share
- Contains no artificial sweeteners, flavors, or preservatives



| 15 powder packets | Retail | Whsle | LP |
|-------------------|--------|-------|----|
| Item# 24113 | \$37 | \$29 | 19 |

| 1-16.9 fl oz bottle | Retail | Whsle | LP |
|----------------------|--------|-------|----|
| Item# 24104 | \$48 | \$38 | 30 |
| 2-16.9 fl oz bottles | Retail | Whsle | LP |
| Item# 24105 | \$96 | \$76 | 60 |



**4Life Transfer Factor
RioVida Chews Tri-Factor Formula**

PRIMARY SUPPORT: Immune System, Healthy Aging, Antioxidant, Overall Wellness*
SECONDARY SUPPORT: Brain Health, Heart Health, Energy*

The immune system support of RioVida in a delicious, convenient chew*

- Provides immune system and antioxidant benefits*
- Has a delicious berry flavor
- Comes in convenient, individually wrapped chews for ages four and up
- Includes vitamin C for an extra immune system boost*
- Contains certified 4Life Transfer Factor to Raise Your Immune I.Q.®*

| 30 wrapped chews | Retail | Whsle | LP |
|------------------|--------|-------|----|
| Item# 24118 | \$34 | \$27 | 21 |



**4Life Transfer Factor
RioVida Burst Tri-Factor Formula**

PRIMARY SUPPORT: Immune System, Healthy Aging, Antioxidant, Overall Wellness*
SECONDARY SUPPORT: Brain Health, Heart Health, Energy*

The immune system goodness of RioVida, conveniently packaged in a smooth and delicious edible gel blend*

- Contains certified 4Life Transfer Factor and a proprietary combination of antioxidant-rich natural fruits, including açai, pomegranate, blueberry, and elderberry*
- Contains 4Life Transfer Factor, which is clinically proven to activate the immune system within two hours¹
- Is portable and easy to share
- Includes UltraFactor, OvoFactor, and NanoFactor—Tri-Factor Formula
- Is for ages four and up

| 15 gel packs | Retail | Whsle | LP |
|--------------|--------|-------|----|
| Item# 24110 | \$49 | \$39 | 27 |

1. Clinical study on the rapid immune modulating effects of 600 mg of 4Life Transfer Factor Blend compared to placebo. G. Jensen, NIS Labs Report 058-006.

***THESE STATEMENTS HAVE NOT BEEN EVALUATED BY THE FOOD AND DRUG ADMINISTRATION. THESE PRODUCTS ARE NOT INTENDED TO DIAGNOSE, TREAT, CURE, OR PREVENT ANY DISEASE.**

RiteStart®

Beyond Everyday Nutrition*

RiteStart products contain essential vitamin and mineral building blocks for good nutrition and 4Life Transfer Factor. Named for the exact purpose they provide—a right start for your day, for your health, and for your life—RiteStart products help you look and feel great.*



Scan here to learn more about
RiteStart products





*THESE STATEMENTS HAVE NOT BEEN EVALUATED BY THE FOOD AND DRUG ADMINISTRATION. THESE PRODUCTS ARE NOT INTENDED TO DIAGNOSE, TREAT, CURE, OR PREVENT ANY DISEASE.



1 - 4Life Transfer Factor Plus Tri-Factor Formula capsule



1 - Essential Fatty Acid Complex gel capsule



2 - Vitamin and Mineral Blend tablets with vitamin D, magnesium, and antioxidants*



2 - Female Support Blend tablets



RiteStart Women

PRIMARY SUPPORT: Immune System, Healthy Aging, Antioxidant, Heart Health, Female Health, Multivitamin & Mineral, Muscle & Bone Health, Overall Wellness*

SECONDARY SUPPORT: Brain Health, Energy, Eye Health, Skin Health & Beauty*

Twice-daily supplement packets for women

TAKE RITESTART WOMEN EVERY DAY FOR:

- Immune system support from 4Life Transfer Factor Plus Tri-Factor Formula*
- Specific female system support*
- Bone health support*
- Skin health support*
- A unique blend of antioxidants*
- Cardiovascular and circulatory support*
- Support for healthy hormonal balance*
- Vision and eye health support*

| 30 packets | Retail | Whsle | LP |
|----------------|--------|-------|-----|
| Item# 27019 | \$91 | \$72 | 55 |
| 2-pack | Retail | Whsle | LP |
| Item# 27020 | \$170 | \$142 | 110 |
| 1 Women, 1 Men | Retail | Whsle | LP |
| Item# 26541 | \$170 | \$142 | 110 |



1 - 4Life Transfer Factor Plus Tri-Factor Formula capsule



1 - Essential Fatty Acid Complex gel capsule



2 - Vitamin and Mineral Blend tablets with antioxidants



2 - Male Support Blend capsules



RiteStart Men

PRIMARY SUPPORT: Immune System, Healthy Aging, Antioxidant, Heart Health, Male Health, Multivitamin & Mineral, Muscle & Bone Health, Overall Wellness*

SECONDARY SUPPORT: Brain Health, Energy, Eye Health, Skin Health*

Twice-daily supplement packets for men

TAKE RITESTART MEN EVERY DAY FOR:

- Immune system support from 4Life Transfer Factor Plus Tri-Factor Formula*
- Specific male system support*
- Bone health support*
- Skin health support*
- A unique blend of antioxidants*
- Cardiovascular and circulatory support*
- Vision and eye health support*

| 30 packets | Retail | Whsle | LP |
|----------------|--------|-------|-----|
| Item# 26538 | \$91 | \$72 | 55 |
| 2-pack | Retail | Whsle | LP |
| Item# 26539 | \$170 | \$142 | 110 |
| 1 Women, 1 Men | Retail | Whsle | LP |
| Item# 26541 | \$170 | \$142 | 110 |

*THESE STATEMENTS HAVE NOT BEEN EVALUATED BY THE FOOD AND DRUG ADMINISTRATION. THESE PRODUCTS ARE NOT INTENDED TO DIAGNOSE, TREAT, CURE, OR PREVENT ANY DISEASE.



RiteStart Kids & Teens

PRIMARY SUPPORT: Immune System, Multivitamin & Mineral, Overall Wellness*

SECONDARY SUPPORT: Energy; Muscle, Bone, & Joint Health; Skin Health*

Great for kids and teens ages 2–18

TAKE RITESTART KIDS & TEENS EVERY DAY FOR:

- 300 to 600 mg of 4Life Transfer Factor Tri-Factor Formula
- Immune system support to help your body recognize, respond to, and remember potential health threats*
- 22 essential vitamins and minerals for growing bodies*
- Support for strong bones*
- B vitamins and the essential nutrient choline for healthy brain function*
- Healthy vision, muscle function, and skin support*
- Antioxidant support*
- Vitamins A, C, and E

RiteStart Kids & Teens is available in 120-count bottles of chewable tablets in assorted citrus cream and sour apple flavors. Suggested serving is two (2) or four (4) chewable tablets daily, depending on age.

| 120 tablets | Retail | Whsle | LP |
|-------------|--------|-------|----|
| Item# 24126 | \$62 | \$49 | 35 |

***THESE STATEMENTS HAVE NOT BEEN EVALUATED BY THE FOOD AND DRUG ADMINISTRATION. THESE PRODUCTS ARE NOT INTENDED TO DIAGNOSE, TREAT, CURE, OR PREVENT ANY DISEASE.**





NutraStart Blue Vanilla

PRIMARY SUPPORT: General Nutrition, Vitamin & Mineral*

SECONDARY SUPPORT: Weight Management, Immune System*
Support weight management and optimized macro and micronutrient nutrition with NutraStart Blue Vanilla*

- Supports a healthy immune system response*
- Provides potent antioxidant support*
- Is a good source of fiber*
- Supports satiety and may reduce feelings of hunger*
- Supports healthy teeth and bones*
- Promotes energy production*
- Supports cardiovascular health*
- Supports eye health*

| 15-serving canister | Retail | Whsle | LP |
|---------------------|--------|-------|----|
| Item# 28130 | \$70 | \$55 | 30 |

Digest4Life[®]

Premier Digestive Support*

Digest4Life is 4Life's premier digestive health line that features exclusive and effective products powered by 4Life Transfer Factor.*



Scan here to learn more about
Digest4Life products





*THESE STATEMENTS HAVE NOT BEEN EVALUATED BY THE FOOD AND DRUG ADMINISTRATION. THESE PRODUCTS ARE NOT INTENDED TO DIAGNOSE, TREAT, CURE, OR PREVENT ANY DISEASE.

U.S. | 4 LIFE PRODUCT CATALOG

Use the Digest4Life Reset System twice a year to cleanse, detox, and replenish your digestive system!*



Digest4Life Reset System

PRIMARY SUPPORT: Digestive Health*
SECONDARY SUPPORT: Immune System*

- Cleans and purifies a clogged gastrointestinal tract*
- Nourishes liver function, supporting its role in the digestive process*
- Soothes and supports the gastrointestinal tract*

- Optimizes healthy gut bacteria growth with our exclusive microbeadlet delivery*
- Increases the amount and longevity of beneficial gut flora by up to 1,000 times over standard delivery*
- Supports healthy immune system function and digestive health with the power of 4Life Transfer Factor*

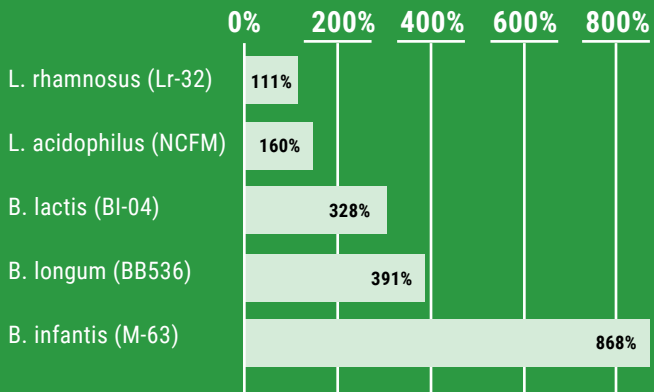
- 2 Pre/o Biotics
- 1 4Life Transfer Factor Tri-Factor Formula
- 1 Fibre System Plus
- 1 Super Detox
- 1 Digestive Enzymes
- 1 Aloe Vera Stix
- 1 Digest4Life Reset System Guidebook

| Digest4Life Reset System | Retail | Whsle | LP |
|--------------------------|--------|-------|-----|
| Item# 53996 | \$284 | \$237 | 166 |



4Life Transfer Factor Acts as a Prebiotic by Boosting the Growth of Probiotics*

4Life Transfer Factor Tri-Factor Formula



An independent university study assessed the potential benefit of 4Life Transfer Factor Tri-Factor Formula in Pre/o Biotics. This in vitro study measured probiotic growth in the presence or absence of 4Life Transfer Factor Tri-Factor Formula in comparison to common prebiotics. Results revealed that 4Life Transfer Factor Tri-Factor Formula enhances Pre/o Biotics by stimulating probiotic growth. These data suggest that 4Life Transfer Factor Tri-Factor Formula has prebiotic effects and enhances the benefits of the other ingredients in Pre/o Biotics.* Hoffman, D., Oberg, C., & Domek, M. (2018). Rapid method for measuring the effect of prebiotics on probiotic bacterial growth. Weber State University, UT. American Dairy Science Association, Knoxville, TN (conference abstract #M123). <https://m.adsa.org/2018/abs/t/74631>



Pre/o Biotics

PRIMARY SUPPORT: Digestive Health, Immune System*

The only prebiotic/probiotic product in the world with 4Life Transfer Factor*

- Optimizes healthy gut bacteria growth with our exclusive microbeadlet delivery*
- Increases the amount and longevity of beneficial gut flora by up to 1,000 times over standard delivery*
- Supports healthy immune system function*
- Requires no refrigeration

| 15 stick packs | Retail | Whsle | LP |
|----------------|--------|-------|----|
| Item# 23020 | \$54 | \$43 | 32 |

*THESE STATEMENTS HAVE NOT BEEN EVALUATED BY THE FOOD AND DRUG ADMINISTRATION. THESE PRODUCTS ARE NOT INTENDED TO DIAGNOSE, TREAT, CURE, OR PREVENT ANY DISEASE.



Aloe Vera Stix

PRIMARY SUPPORT: Digestive Health*
SECONDARY SUPPORT: Immune System, Overall Wellness*

Aloe vera in powder packets for digestive health support*

- Aids recovery from intestinal cleanses and detox diets*
- Promotes healthy gastrointestinal function*
- Soothes the gastrointestinal tract*
- Promotes healthy immune system function*

| 15 powder packets | Retail | Whsle | LP |
|-------------------|--------|-------|----|
| Item# 23033 | \$36 | \$30 | 22 |



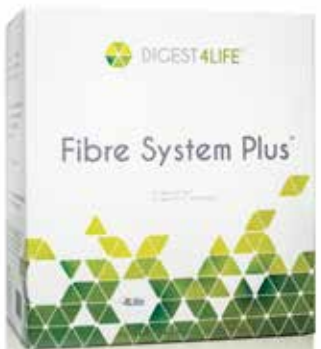
Super Detox

PRIMARY SUPPORT: Cleansing & Detox, Digestive Health*

Support for healthy liver function*

- Includes milk thistle, which supports healthy liver function*
- Contains red clover and artichoke to aid in detoxification and liver strength*
- Provides antioxidant support through n-acetyl-l-cysteine*

| 60 capsules | Retail | Whsle | LP |
|-------------|--------|-------|----|
| Item# 23015 | \$37 | \$29 | 21 |



Fibre System Plus

PRIMARY SUPPORT: Cleansing & Detox, Digestive Health*
SECONDARY SUPPORT: Weight Management*

A 10-day gastrointestinal cleanse*

- Contains more than 20 herbal ingredients to provide thorough, comfortable intestinal cleansing and purification*
- Provides an excellent gastrointestinal cleanse to start any nutritional regimen*
- Contains key ingredients such as cascara sagrada, frangula, prunes, pineapple, papain, and bromelain

| | | | |
|--------------------|--------|-------|----|
| 30 packets | Retail | Whsle | LP |
| Item# 28134 | \$41 | \$32 | 22 |

Tea4Life

PRIMARY SUPPORT: Cleansing & Detox, Digestive Health*

Natural cleansing tea for intestinal maintenance and regularity*

- Features senna leaf and other herbs to support colon health*
- Provides an herbal alternative for healthy digestive cleansing*
- Boasts a tasty apple-cinnamon flavor with no artificial colors, flavors, or sweeteners

| | | | |
|--------------------|--------|-------|----|
| 30 tea bags | Retail | Whsle | LP |
| Item# 13004 | \$25 | \$20 | 14 |

*THESE STATEMENTS HAVE NOT BEEN EVALUATED BY THE FOOD AND DRUG ADMINISTRATION. THESE PRODUCTS ARE NOT INTENDED TO DIAGNOSE, TREAT, CURE, OR PREVENT ANY DISEASE.



PhytoLax

PRIMARY SUPPORT: Cleansing & Detox*
SECONDARY SUPPORT: Digestive Health*

Support for digestive health, cleansing, and detox*

- Contains herbs such as cascara sagrada and ginger to safely activate digestive elimination*
- Promotes healthy regularity*

| 30 vegetable capsules | Retail | Whsle | LP |
|-----------------------|--------|-------|----|
| Item# 28131 | \$28 | \$22 | 16 |



Digestive Enzymes

PRIMARY SUPPORT: Cleansing & Detox,
Digestive Health*

Complete digestive enzyme solution for all your digestive health needs*

- Supports healthy digestion of food*
- Reduces intestinal discomfort associated with food consumption*
- Supports overall digestive health*

| 90 vegetable capsules | Retail | Whsle | LP |
|-----------------------|--------|-------|----|
| Item# 23017 | \$41 | \$32 | 23 |

Over 70% of your
immune system resides
in your gut!

4LifeTransform[®]

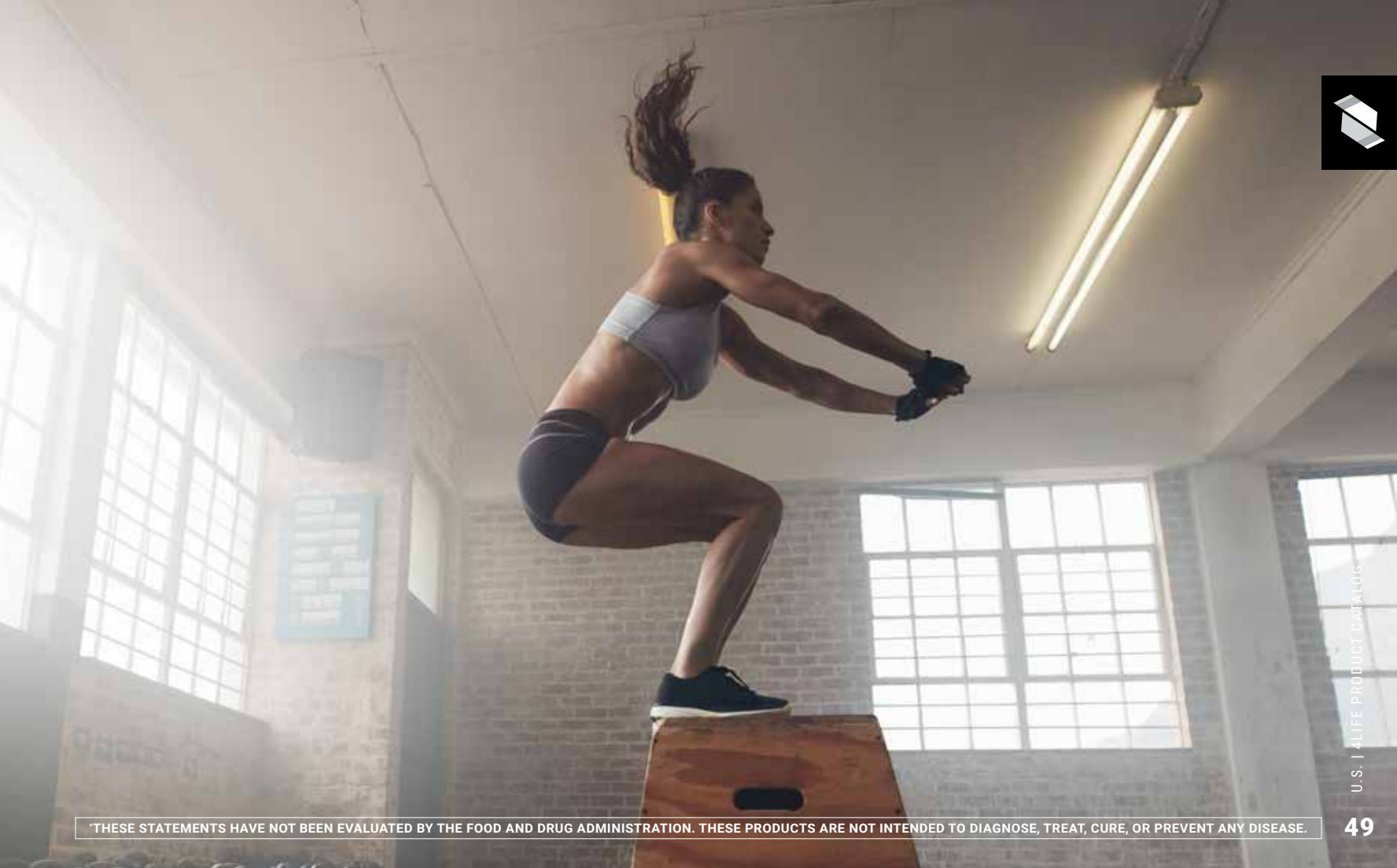
Live a Vibrant Life*

4LifeTransform products support you on every step of your body transformation journey, whether your goal is to build muscle, manage your weight, or increase vitality.*



Scan here to learn more about
4LifeTransform products





*THESE STATEMENTS HAVE NOT BEEN EVALUATED BY THE FOOD AND DRUG ADMINISTRATION. THESE PRODUCTS ARE NOT INTENDED TO DIAGNOSE, TREAT, CURE, OR PREVENT ANY DISEASE.

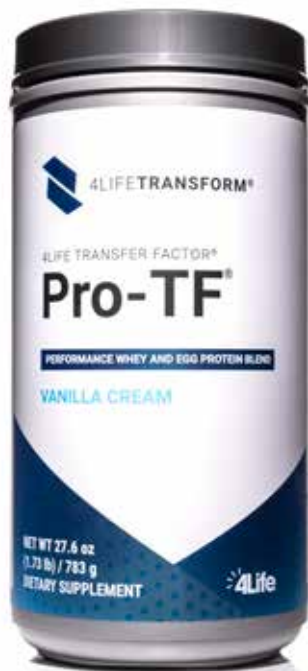
Pro-TF

PRIMARY SUPPORT: Weight Management, Muscle & Sports Performance, Immune System*

SECONDARY SUPPORT: Heart Health; Muscle, Bone, & Joint Health*

Protein supplement to help you transform your body and live a more fulfilling and vibrant life*

- Provides 20 g of patent-pending 4LifeTransform Protein Formula per 2-scoop serving and is one of the most advanced and effective proteins available to help you transform your body, optimize performance, and promote health*



- Includes an essential protein source, extensively hydrolyzed (high DH) whey and egg protein, and you get 600 mg of 4Life Transfer Factor in every 2-scoop serving*
- Offers an independently and university-tested formula to support calorie and fat burning, muscle protection and growth, increased metabolism, and hunger suppression*
- Includes only 140 calories per 2-scoop serving, is gluten-free, and contains less than 1 g of lactose
- Contains 4Life Transfer Factor, which is clinically proven to activate the immune system within two hours¹

| Vanilla Cream 23-serving canister | Retail | Whsle | LP |
|--------------------------------------|--------|-------|----|
| Item# 27568 | \$73 | \$58 | 26 |
| Chocolate 23-serving canister | Retail | Whsle | LP |
| Item# 27577 | \$73 | \$58 | 26 |





4LifeTransform PreZoom

PRIMARY SUPPORT: Exercise Performance, Muscle*
SECONDARY SUPPORT: Immune System, Brain Health*

“Zoom” through your workout and fine-tune your mind and body during exercise*

- Helps build lean muscle mass, strength, and endurance*
- Improves focus while exercising*
- Supports the immune system, which can be compromised by intense exercise*
- Comes in an easy-to-mix, melon-flavored powder*

| 320 g canister | Retail | Whsle | LP |
|----------------|--------|-------|----|
| Item# 24204 | \$67 | \$53 | 35 |



4LifeTransform Protein Bar

PRIMARY SUPPORT: Muscle and Sports Performance
SECONDARY SUPPORT: Weight Management

A delicious, high-protein chocolate and peanut butter snack

- Satiates hunger between meals with 190 calories
- Provides high-protein nutrition
- Supports lean muscle
- Is for adults and children ages four and up

| 10 bars | Retail | Whsle | LP |
|-------------|--------|-------|----|
| Item# 17504 | \$46 | \$36 | 20 |

*THESE STATEMENTS HAVE NOT BEEN EVALUATED BY THE FOOD AND DRUG ADMINISTRATION. THESE PRODUCTS ARE NOT INTENDED TO DIAGNOSE, TREAT, CURE, OR PREVENT ANY DISEASE.



ShapeRite

PRIMARY SUPPORT: Weight Management*

SECONDARY SUPPORT: Antioxidant, Heart Health, Glucose Metabolism*

Helps offset the negative effects of high-fat, high-carbohydrate, and starch-heavy meals by binding fats and blocking excess starches and sugars*

- Aids in fat loss and appetite and weight management*
- Supports fat and sugar metabolism and balances satiety hormones*
- Can reduce weight gain caused by excess sugar intake*
- Supports healthy glucose levels*

| 90 vegetable capsules | Retail | Whsle | LP |
|-----------------------|--------|-------|----|
| Item# 27598 | \$41 | \$32 | 24 |



4Life Transform Burn

PRIMARY SUPPORT: Weight Management*

Scientifically studied thermogenic blend to support accelerated body transformation*

- Helps adults of all ages achieve a lean, sleek, and healthy body*
- Supports an accelerated approach to body transformation by igniting fat burning and reducing hunger*
- Provides energy support to ignite your workouts for optimum performance*

| 80 vegetable capsules | Retail | Whsle | LP |
|-----------------------|--------|-------|----|
| Item# 27584 | \$71 | \$56 | 38 |



4Life Transfer Factor Renuvo

PRIMARY SUPPORT: Immune System, Healthy Aging, Antioxidant, Overall Wellness*

A patented adaptogenic formula that targets healthy aging by supporting a more youthful and healthy response to environmental threats*

- Promotes total-body recovery*
- Helps counteract the telltale signs of aging*
- Supports healthy mental acuity*
- Promotes healthy sexual vitality and energy*

| 120 capsules | Retail | Whsle | LP |
|--------------|--------|-------|----|
| Item# 24201 | \$70 | \$55 | 42 |





4LifeTransform Woman

PRIMARY SUPPORT: Women's Health & Healthy Cellular Aging*

SECONDARY SUPPORT: Skin Health & Antioxidants*

Female support for healthy cellular aging and vibrant living*

- Supports women's physical health for a youthful, vibrant life*
- Supports healthy skin and the body's production of nitric oxide, which decreases with age*
- Provides immune system support*

| | | | |
|-------------------------------|--------|-------|----|
| 120 vegetable capsules | Retail | Whsle | LP |
| Item# 27016 | \$52 | \$41 | 29 |



4LifeTransform Man

PRIMARY SUPPORT: Bone Health, Men's Health & Vitality*

SECONDARY SUPPORT: Healthy Cellular Aging*

Male health support and healthy aging*

- Supports healthy cellular aging and antioxidant levels*
- Optimizes lean muscle growth, mass, and strength*
- Promotes men's health and optimal health and well-being*

| | | | |
|-------------------------------|--------|-------|----|
| 120 vegetable capsules | Retail | Whsle | LP |
| Item# 26535 | \$49 | \$39 | 30 |

*THESE STATEMENTS HAVE NOT BEEN EVALUATED BY THE FOOD AND DRUG ADMINISTRATION. THESE PRODUCTS ARE NOT INTENDED TO DIAGNOSE, TREAT, CURE, OR PREVENT ANY DISEASE.



OR



4Life Transform Get Burning® Pack for Women or Men

PRIMARY SUPPORT: Weight Management, Calorie and Fat Burning, Metabolism*

SECONDARY SUPPORT: Immune System, Energy*

Product packs for men and women specifically designed to get you energized, help you burn calories, and support general nutrition*

- **2 NutraStart Blue Vanilla:** Is a great in-between-meal snack that provides macronutrients, micronutrients, vitamins, minerals, fiber, and protein*
- **1 RiteStart Women or RiteStart Men:** Provides a rich source of vitamins, minerals, essential fatty acids, and more to support the immune system, overall wellness, and male or female health*
- **1 4Life Transform Burn:** Features a thermogenic blend that can ignite your metabolism and supports burning calories**
- **1 Energy Go Stix Berry:** Supports the immune system and energy levels, supports thermogenesis, and provides your muscles with amino acids*

| 4Life Transform Get Burning® Pack for Women | | | |
|---|--------|-------|-----|
| Item# | Retail | Whsle | LP |
| Item# 55676 | \$295 | \$246 | 143 |
| 4Life Transform Get Burning® Pack for Men | | | |
| Item# | Retail | Whsle | LP |
| Item# 55677 | \$295 | \$246 | 143 |



4LifeTransform Lean and Fit* Pack for Women

PRIMARY SUPPORT: Muscle, Joints, Workout Recovery*
SECONDARY SUPPORT: Immune System; Hair, Skin, & Nails*

Product packs to help women optimize their workouts and look and feel their best*

- **1 Pro-TF Vanilla Cream or Pro-TF Chocolate:** University-studied† whey and egg protein that supports lean muscle‡, burns calories‡, increases fat metabolism‡, promotes satiety, and more*
- **1 4LifeTransform Burn:** A thermogenic blend that can ignite your metabolism and supports burning calories**
- **2 4Life Transfer Factor Collagen** (strawberry-mango): Total-body formula that supports healthy cellular aging with five types of collagen to support hair, skin, nails, and joint health*
- **1 4LifeTransform PreZoom:** A pre-workout powder to support energy, stamina, endurance, and mental alertness; fuel lean muscle and post-workout recovery; and enhance immune system function*
- **1 4Life Transfer Factor Renuvo:** A total-body muscle recovery supplement that helps your body and mind cope with everyday stress, supports mental alertness, and supports your immune system*

| 4LifeTransform Lean and Fit* Pack for Women - Vanilla | Retail | Whsle | LP |
|--|--------|-------|-----|
| Item# 55678 | \$302 | \$252 | 140 |

| 4LifeTransform Lean and Fit* Pack for Women - Chocolate | Retail | Whsle | LP |
|--|--------|-------|-----|
| Item# 55775 | \$302 | \$252 | 140 |



4LifeTransform Shred* Pack for Men

PRIMARY SUPPORT: Muscle, Joints, Workout Recovery*
SECONDARY SUPPORT: Immune System, Male Health*

Product packs to help men optimize their workouts and gain muscle*

- **1 Pro-TF Vanilla Cream or Pro-TF Chocolate:** University-studied† whey and egg protein that supports lean muscle‡, burns calories‡, increases fat metabolism‡, promotes satiety, and more*
- **1 4LifeTransform Burn:** A thermogenic blend that can ignite your metabolism and supports burning calories**
- **1 4LifeTransform Man:** Formula that supports energy and vitality, contains adaptogens and antioxidants to support healthy cellular aging, and promotes men's health and overall well-being*
- **1 4LifeTransform PreZoom:** A pre-workout powder to support energy, stamina, endurance, and mental alertness; fuel lean muscle and post-workout recovery; and enhance immune system function*
- **1 4Life Transfer Factor Renuvo:** A total-body muscle recovery supplement that helps your body and mind cope with everyday stress, supports mental alertness, and supports your immune system*

| 4LifeTransform Shred* Pack for Men - Vanilla | Retail | Whsle | LP |
|---|--------|-------|-----|
| Item# 55679 | \$288 | \$240 | 130 |

| 4LifeTransform Shred* Pack for Men - Chocolate | Retail | Whsle | LP |
|---|--------|-------|-----|
| Item# 55776 | \$288 | \$240 | 130 |

*Products support fitness and weight management in conjunction with a healthy diet and exercise.
 †In preclinical trials.

***THESE STATEMENTS HAVE NOT BEEN EVALUATED BY THE FOOD AND DRUG ADMINISTRATION. THESE PRODUCTS ARE NOT INTENDED TO DIAGNOSE, TREAT, CURE, OR PREVENT ANY DISEASE.**



Energy Is What You Give To Life*

Up your energy with Energy Go Stix! These on-the-go packets are infused with 4Life Transfer Factor and a blend of energy-boosting ingredients.*



Scan here to learn more about
Energy Go Stix products





*THESE STATEMENTS HAVE NOT BEEN EVALUATED BY THE FOOD AND DRUG ADMINISTRATION. THESE PRODUCTS ARE NOT INTENDED TO DIAGNOSE, TREAT, CURE, OR PREVENT ANY DISEASE.



Energy Go Stix

PRIMARY SUPPORT: Energy*

SECONDARY SUPPORT: Weight Management, Immune System*

Energy supplement in ready-to-mix powder packs*

- Features an energy boost from a synergistic amino acid blend, yerba mate, green tea extract, and three forms of ginseng*
- Contains 4Life Transfer Factor to support the immune system*

| | | | | |
|------------------------|--------|-------|----|--|
| Berry | | | | |
| 30 powder packets | Retail | Whsle | LP | |
| Item# 27563 | \$62 | \$49 | 36 | |
| Orange Citrus | | | | |
| 30 powder packets | Retail | Whsle | LP | |
| Item# 27572 | \$62 | \$49 | 36 | |
| Pink Lemonade | | | | |
| 30 powder packets | Retail | Whsle | LP | |
| Item# 27575 | \$62 | \$49 | 36 | |
| Kiwi Strawberry | | | | |
| 15 powder packets | Retail | Whsle | LP | |
| Item# 27595 | \$35 | \$28 | 20 | |
| Tropical | | | | |
| 15 powder packets | Retail | Whsle | LP | |
| Item# 27587 | \$35 | \$28 | 20 | |



*THESE STATEMENTS HAVE NOT BEEN EVALUATED BY THE FOOD AND DRUG ADMINISTRATION. THESE PRODUCTS ARE NOT INTENDED TO DIAGNOSE, TREAT, CURE, OR PREVENT ANY DISEASE.

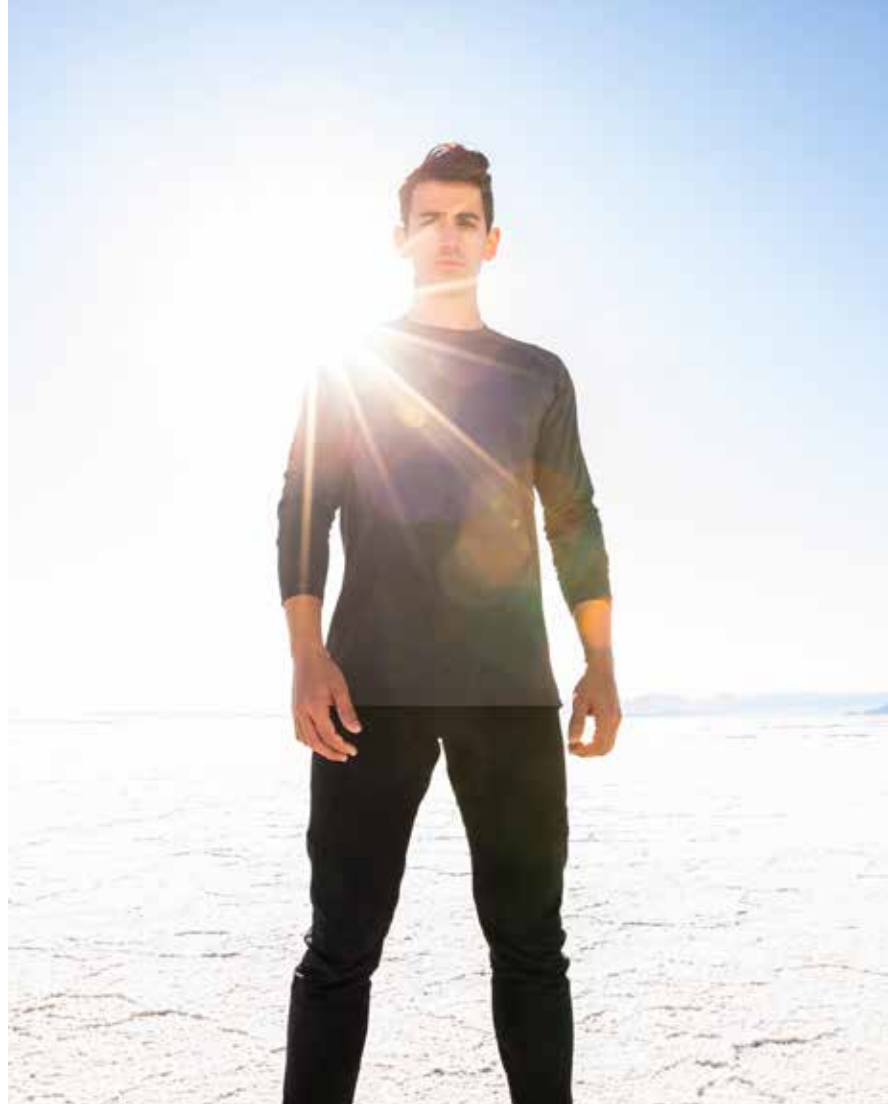
4LifeElements®

Revolutionary Mineral Solutions

4LifeElements are engineered from earth's precious metals that have been purified and preserved in a liquid environment. These products provide cellular support at the atomic level. From our earth; for your life.*



Scan here to learn more about
4LifeElements products



Gold Factor

PRIMARY SUPPORT: Longevity, Healthy Aging*

SECONDARY SUPPORT: Brain Health, Joint Health*

Supercharge your cells with Gold Factor*

- Precious: Delicately suspended gold particles refract light, turning the solution an elegant shade of rose
- Pure: Tested for safety and purity, Gold Factor combines ultra-pure water and intricately shaped particles purer than 24 karat gold
- Powerful: Every drop contains billions of gold particles that activate your trillions of cells—a true powerhouse of cellular support*
- Supports joint comfort†
- Promotes youthfulness by supporting brain health and memory**
- Titan Award recipient



| 20 fl oz bottle | Retail | Whsle | LP |
|-----------------|--------|-------|----|
| Item# 28123 | \$85 | \$67 | 53 |

Zinc Factor

PRIMARY SUPPORT: Immune System*

Revolutionary mineral solution that combines the immune system support of ionic silver with zinc*

- Features zinc, which, alone, aids in empowering the function of key immune system cells like T cells*
- Contains zinc and silver—two minerals that can boost your immune system in times of stress or when you need extra immune system support*
- Is one of the only ionic solutions available that features the power of zinc AND silver ions for optimal benefits*
- Formulated through a proprietary electrochemical process and is one of the only ionic solutions available*



| 20 fl oz bottle | Retail | Whsle | LP |
|-----------------|--------|-------|----|
| Item# 24127 | \$82 | \$65 | 53 |

*As shown in laboratory experiments. †Results in a human clinical study compared to baseline.

THESE STATEMENTS HAVE NOT BEEN EVALUATED BY THE FOOD AND DRUG ADMINISTRATION. THESE PRODUCTS ARE NOT INTENDED TO DIAGNOSE, TREAT, CURE, OR PREVENT ANY DISEASE.

äKwä® Skincare

**Flawless.
Ageless.
Effortless.**

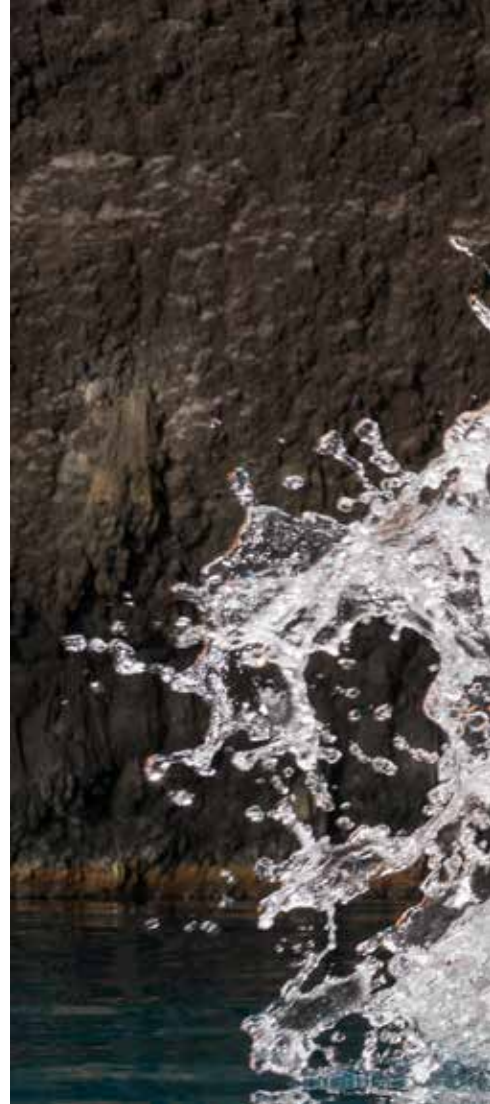
Step away from your day and into your world with a skincare regimen designed to transform the appearance of your complexion using nature-inspired, moisture-rich formulas and ancient Korean beauty techniques. Green tea blends and ferments, rose water, and other water sources come together in naturally fragranced formulas that incorporate the simple science of renewal.



Scan here to learn more about
äKwä products

All äKwä formulas are:

- Paraben-free, sulfate-free, and phthalate-free
- Dermatologist-tested for mildness
- Kind to your skin and the environment
- Cruelty-free—never tested on animals
- Formulated with all-natural fragrances
- Gluten-free





Oil-to-Foam Cleanser

Splash. Rinse. Refresh.

- Combines fermented green tea water and sea water for a refreshing and effective two-phase cleanser
- Refines pores with rice ferment and provides nourishing and skin-smoothing enzymes to moisturize and purify your complexion
- Provides a vegan formula that lifts away debris before transforming into a foaming cleanser

| 3.4 fl oz bottle | Retail | Whsle | LP |
|------------------|--------|-------|----|
| Item# 25133 | \$33 | \$26 | 19 |



Volcanic Mud Mask

Purify. Sustain. Refine.

- Combines fermented green tea water, black soybean extract, and earth-hewn volcanic ash to create a nature-rich, beautifying experience
- Renews, refreshes, and energizes the look of your complexion, while volcanic properties cleanse the skin's surface for a purifying experience
- Provides a vegan formula that draws out deep impurities, refines pores, lifts dead skin cells, and, during wash-off, exfoliates to smooth and energize the skin's surface

| 3.5 oz tube | Retail | Whsle | LP |
|-------------|--------|-------|----|
| Item# 25137 | \$38 | \$30 | 22 |



SPF 30 Moisturizing Sunscreen

Shield. Shade. Repel.

- Creates an environmental veil to repel modern urban environmental stressors
- Helps prevent sunburn
- Features a light, creamy formula that disperses easily and evenly to provide optimal protection

| 2 fl oz tube | Retail | Whsle | LP |
|--------------|--------|-------|----|
| Item# 25189 | \$44 | \$36 | 27 |

Four-Way Toner

Clear. Illuminate. Prepare.

- Clears and brightens the complexion with fermented green tea water and rose water while supporting surface smoothness, firmness, elasticity, and optimal moisture levels
- Prepares your skin for additional cleansing and moisture, primes your skin for cosmetics, sets your makeup look, or mists your skin any time of the day
- Provides an alcohol-free and vegan formula

| 3.4 fl oz bottle | Retail | Whsle | LP |
|------------------|--------|-------|----|
| Item# 25135 | \$35 | \$28 | 20 |



Vitamin Essence

Nourish. Fortify. Brighten.

- Nourishes and moisturizes your complexion with fermented green tea water and red maple leaf extract
- Supports a healthy skin surface microbiome and skin conditioning
- Sustains skin's environment against daily stressors
- Infuses your skin with essential vitamins, ferments, and super antioxidants in a vegan formula for a nourished, more youthful-looking complexion

| 1.7 fl oz bottle | Retail | Whsle | LP |
|------------------|--------|-------|----|
| Item# 25139 | \$48 | \$38 | 29 |



Eye Cream

Polish. Infuse. Firm.

- Soothes puffiness around the eye area with fermented green tea water, cucumber, and bamboo juice
- Promotes a smoother, more refined, and more polished outer eye appearance with moisturizers, decadent emollients, and an ancient mushroom that's naturally rich in plant-derived collagen
- Offers a vegan formula that settles the appearance of dark circles around the eyes

| 1 fl oz tube | Retail | Whsle | LP |
|--------------|--------|-------|----|
| Item# 25141 | \$48 | \$39 | 30 |



Moisture Cream

Quench. Correct. Firm.

- Helps calm and reinvent the skin with fermented green tea water, birch tree sap, and ginseng
- Offers a surge of intense hydration in a light and airy, cloudlike formula
- Corrects imperfections and reduces the appearance of wrinkles

| 2.5 oz container | Retail | Whsle | LP |
|------------------|--------|-------|----|
| Item# 25143 | \$34 | \$27 | 19 |

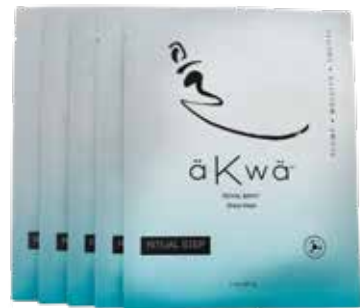


Sheet Mask

Plump. Moisten. Smooth.

- Is the only sheet mask in the world with 4Life Transfer Factor from cow colostrum and chicken egg yolks to soften and soothe the skin to a royal luster
- Infuses intense and sustained moisture to the skin for a noticeable improvement in the appearance of moisture levels after one use
- Brightens the complexion and greatly lessens the appearance of fine lines, wrinkles, and lax skin

| 5 ct box | Retail | Whsle | LP |
|-------------|--------|-------|----|
| Item# 25145 | \$37 | \$29 | 22 |





äKwä Skincare System

The system includes all our core äKwä products plus a simple guide to help you transform the appearance of your skin using nature-inspired, moisture-rich formulas and ancient Korean beauty techniques.

- 1—Oil-to-Foam Cleanser
- 1—Volcanic Mud Mask
- 1—Four-Way Toner
- 1—Vitamin Essence
- 1—Eye Cream
- 1—Sheet Mask (5 ct)
- 1—Moisture Cream
- 1—SPF 30 Moisturizing Sunscreen
- 1—Product guide
- 1—Silky äKwä logo drawstring bag

| äKwä Skincare System 30-day supply | Retail | Whsle | LP |
|------------------------------------|--------|-------|-----|
| Item# 25154 | \$281 | \$234 | 162 |



enummi[®] Personal Care

The Beauty of Science

enummi products offer you a truly indulgent experience with top-quality shower, oral care, and personal hygiene formulas. Products include natural botanicals, antioxidants, and other ingredients to optimize your appearance.



Scan here to learn more about
enummi Personal Care products





enummi Body Lotion

Soothing body lotion for healthy skin

- Contains white tea to protect your skin from the elements
- Provides a complex range of minerals and amino acids to the skin
- Promotes soft, smooth skin with aloe vera and shea butter

| 8 fl oz tube | Retail | Whsle | LP |
|--------------|--------|-------|----|
| Item# 25003 | \$23 | \$18 | 8 |



enummi Toothpaste

A gentle, fluoride-free formula that cleanses teeth and freshens breath without harsh, abrasive agents

- Dissolves food film for a clean, bright smile
- Freshens breath
- Offers a refreshing mint flavor and xylitol

| 4 fl oz tube | Retail | Whsle | LP |
|--------------|--------|-------|----|
| Item# 25050 | \$15 | \$12 | 5 |





enummi Shampoo

A sulfate-free, moisture-rich cleansing experience

- Cleanses gently, yet effectively, with coconut-derived ingredients
- Includes protein, amino acids, and luscious botanicals
- Helps prevent color fadeout
- Provides protection from the environment, manageability, and vibrant shine
- Works well for daily use on all hair types

| 11.5 fl oz bottle | Retail | Whsle | LP |
|-------------------|--------|-------|----|
| Item# 25113 | \$23 | \$18 | 10 |

enummi Body Wash

An invigorating cleanser that hydrates the skin

- Features a light gel formula that creates a luxurious lather with a lively fragrance
- Leaves skin feeling soft and smooth, without lingering dryness
- Offers gentle cleansing for the entire family
- Includes nature-derived ingredients like mango, avocado, and honey extract
- Combines perfectly with enummi Body Lotion for ultimate moisturizing benefits

| 11.5 fl oz bottle | Retail | Whsle | LP |
|-------------------|--------|-------|----|
| Item# 25111 | \$24 | \$19 | 10 |

enummi Conditioner

Conditioner that leaves hair feeling soft and silky

- Improves manageability and smoothness
- Saturates hair beautifully and rinses effortlessly, leaving hair feeling soft and silky with a vibrant shine
- Features a formula rich in protein, vitamins, and amino acids
- Helps minimize color fading and static, and eases hair and scalp dryness with decadent nature-derived oils and butters
- Provides environmental protection

| 8.7 fl oz tube | Retail | Whsle | LP |
|----------------|--------|-------|----|
| Item# 25118 | \$22 | \$13 | 7 |



4Life Fundamentals[®]

Healthy Beginnings Start Here*

At 4Life, we've harnessed the purest and finest ingredients for our 4Life Fundamentals line—a supplementation portfolio designed to get you on the path to wellness.*



Scan here to learn more about
4Life Fundamentals products





THESE STATEMENTS HAVE NOT BEEN EVALUATED BY THE FOOD AND DRUG ADMINISTRATION. THESE PRODUCTS ARE NOT INTENDED TO DIAGNOSE, TREAT, CURE, OR PREVENT ANY DISEASE.

U.S. | ALIIF PRODUCT CATALOG

BioGenistein Ultra

PRIMARY SUPPORT: Female Health*

SECONDARY SUPPORT: Sleep, Mood, & Stress*

Hormone- and mood-balancing blend for basic female support*

- Contains soy isoflavones, black cohosh, and chaste tree for female health support and healthy hormone levels*
- Supports a positive mood with black cohosh, L-theanine, and chaste tree fruit extract*
- Includes antioxidants from quercetin and turmeric*



| 60 capsules | Retail | Whsle | LP |
|-------------|--------|-------|----|
| Item# 22530 | \$41 | \$32 | 22 |

Cal-Mag Complex

PRIMARY SUPPORT: Muscle, Bone, & Joint Health*

Calcium and magnesium support for healthy bone metabolism and structural system health*

- Contains a potent daily serving of more than 600 mg of calcium, 400 IU of vitamin D, and 270 mg of magnesium to support bone health*
- Contains vital ingredients to support bone growth in people of all ages*



| 90 tablets | Retail | Whsle | LP |
|-------------|--------|-------|----|
| Item# 23520 | \$22 | \$17 | 10 |



Essential Fatty Acid Complex

PRIMARY SUPPORT: Brain Health, Heart Health*

SECONDARY SUPPORT: Weight Management, Overall Wellness*

Essential fatty acids for a healthy heart and brain and healthy respiratory function*

- Features omega-3 and omega-6 fatty acids from fish oil, borage seed oil, flaxseed oil, and safflower seed oil
- Promotes overall cardiovascular health and strong cell membranes*
- Contains CLA (conjugated linoleic acid) for cardiovascular and circulatory health*



| 60 softgels | Retail | Whsle | LP |
|-------------|--------|-------|----|
| Item# 28095 | \$29 | \$23 | 17 |

Fibro AMJ Day-Time Formula

PRIMARY SUPPORT: Muscle, Bone, & Joint Health*

Scientifically advanced support for structural and nervous system health*

- Contains powerful metabolites—magnesium and vitamin B6—essential to energy production*
- Includes glucosamine hydrochloride and methylsulfonylmethane (MSM) for joint support*
- Includes *Boswellia serrata* for additional support*



| 90 capsules | Retail | Whsle | LP |
|-------------|--------|-------|----|
| Item# 24501 | \$34 | \$27 | 20 |

*THESE STATEMENTS HAVE NOT BEEN EVALUATED BY THE FOOD AND DRUG ADMINISTRATION. THESE PRODUCTS ARE NOT INTENDED TO DIAGNOSE, TREAT, CURE, OR PREVENT ANY DISEASE.

Flex4Life

PRIMARY SUPPORT: Muscle, Bone, & Joint Health*

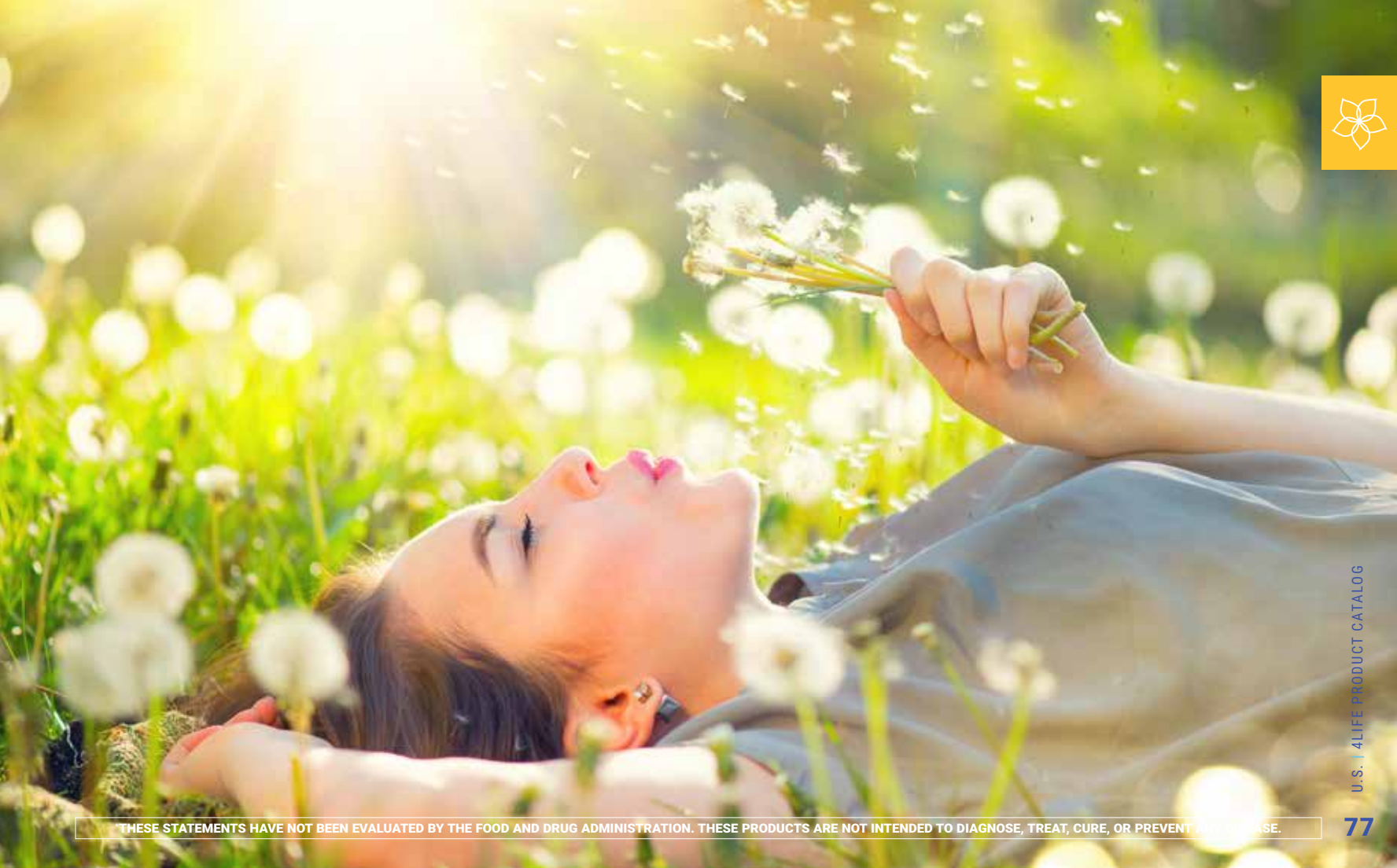
SECONDARY SUPPORT: Antioxidant*

Capsules with nutrients designed to lubricate joints and support a full range of motion*

- Supports healthy joint tissue, fluids, and overall joint flexibility*
- Helps maintain mobility for a comfortable, full range of motion*
- Supports muscle and joint health*
- Features *Terminalia chebula*, hyaluronic acid, and turmeric to support healthy knee function*



| 90 capsules | Retail | Whsle | LP |
|-------------|--------|-------|----|
| Item# 23516 | \$46 | \$36 | 24 |



THESE STATEMENTS HAVE NOT BEEN EVALUATED BY THE FOOD AND DRUG ADMINISTRATION. THESE PRODUCTS ARE NOT INTENDED TO DIAGNOSE, TREAT, CURE, OR PREVENT ANY DISEASE.

Fortified Colostrum

PRIMARY SUPPORT: Immune System, Digestive Health*

SECONDARY SUPPORT: Respiratory System, Healthy Aging*

Bovine-sourced colostrum to support the immune system, digestive function, and a healthy gut microbiome*

- Supports immune system function in the digestive tract*
- May promote healthy brain function*
- Supports respiratory health*
- For adults and children four years of age and older

| 60 capsules | Retail | Whsle | LP |
|-------------|--------|-------|----|
| Item# 28124 | \$44 | \$35 | 26 |



Gurmar

PRIMARY SUPPORT: Glucose Metabolism*

SECONDARY SUPPORT: Weight Management*

Ancient Indian herb famous for helping maintain healthy glucose levels*

- Supports the endocrine system to balance glucose in the body*
- Helps maintain healthy glucose levels*

| 90 capsules | Retail | Whsle | LP |
|-------------|--------|-------|----|
| Item# 4001 | \$25 | \$20 | 16 |





Life C Chewable

PRIMARY SUPPORT: Antioxidant, Multivitamin & Mineral*

SECONDARY SUPPORT: Immune System*

Proprietary blend of vitamin C for enhanced absorption and antioxidant support*

- Features seven active forms of natural vitamin C*
- Uses varied forms to provide antioxidant protection*
- Supports the healthy function of multiple body systems*

| 60 tablets | Retail | Whsle | LP |
|-------------|--------|-------|----|
| Item# 28077 | \$23 | \$18 | 10 |



MusculoSkeletal Formula

PRIMARY SUPPORT: Muscle, Bone, & Joint Health*

Key ingredients that support muscle repair*

- Includes ingredients to support overworked muscles, tendons, ligaments, and nerves*
- Supports bone structure by reducing bone breakdown*
- Supports healthy connective tissue*

| 60 capsules | Retail | Whsle | LP |
|-------------|--------|-------|----|
| Item# 24508 | \$28 | \$22 | 16 |



Multiplex

PRIMARY SUPPORT: Multivitamin & Mineral, Overall Wellness*

Basic daily dose of fundamental vitamins and minerals

- Features essential vitamins and minerals for general health and wellness*
- Contains herbal extracts and citrus bioflavonoids to boost energy levels*

| 60 capsules | Retail | Whsle | LP |
|-------------|--------|-------|----|
| Item# 28039 | \$33 | \$26 | 17 |



Stress Formula

PRIMARY SUPPORT: Sleep, Mood, & Stress*

A calming evening herbal formula to promote relaxation*

- Contains valerian root to support a calm nervous system*
- Includes peppermint to soothe stomach discomfort that may be associated with stress*

| 60 capsules | Retail | Whsle | LP |
|-------------|--------|-------|----|
| Item# 22007 | \$30 | \$24 | 16 |





4Life Fortify

Through our partnership with Feed the Children, you can provide great-tasting meals for children currently experiencing poverty. One bag of 4Life Fortify provides 12–24 meals of rice, lentils, and beans, along with a complete nutritional complex of vitamins, minerals, and 4Life Transfer Factor Tri-Factor Formula to a hungry child.*

- Provides a protein-rich meal with the texture of a true meal, not simply porridge*
- Provides proper nutrition for individuals of all ages*
- Tastes great and can be enjoyed by different cultures around the world



| 12–24 servings/bag | Retail | Whsle | LP |
|--------------------|--------|-------|----|
| Item# 15005 | \$48 | \$40 | 25 |

4Life Fortify is for donation through Feed the Children. Not for personal use.

4Life Research offers an incentive to buy, donate, and promote 4Life Fortify meal packs. Commission is included in the price of the pack and allows Affiliates to invest their time and resources to encourage others to join the 4Life legacy of service. 4Life Fortify is created and supported by 4Life Research: a for-profit company that facilitates donations of purchased 4Life Fortify meal packs to non-profit partners such as Feed the Children. Charity partners distribute 4Life Fortify to children in need without charge or fees.



[Scan here to learn more about 4Life Fortify](#)

*THESE STATEMENTS HAVE NOT BEEN EVALUATED BY THE FOOD AND DRUG ADMINISTRATION. THESE PRODUCTS ARE NOT INTENDED TO DIAGNOSE, TREAT, CURE, OR PREVENT ANY DISEASE.

4Life Product Ingredient Index

CORE 4LIFE TRANSFER FACTOR

4Life Transfer Factor Classic: UltraFactor from cow colostrum.

4Life Transfer Factor Chewable Tri-Factor Formula: 4Life Tri-Factor Formula (UltraFactor, OvoFactor, and NanoFactor).

4Life Transfer Factor Immune Spray—Mint and Orange: Zinc, 4Life Transfer Factor® Blend (UltraFactor and NanoFactor), and Proprietary Blend (colloidal silver, marshmallow, aloe, and lactoferrin).

4Life Transfer Factor Plus Tri-Factor Formula: Zinc, 4Life Tri-Factor Formula (UltraFactor, OvoFactor, and NanoFactor), Proprietary Polysaccharide Complex (IP-6, β -Sitosterol, and other phytosterols), mycelium (*Cordyceps sinensis*) extract, baker's yeast extract, fruiting body (*Agaricus blazeii*) extract, aloe leaf gel extract, oat seed extract, olive leaf extract, maitake fruiting body extract, and shiitake fruiting body extract.

4Life Transfer Factor RenewAll: Purified water, UltraFactor, aloe vera (*Aloe barbadensis*) leaf juice, lavender (*Lavandula angustifolia*) flower extract, chamomile (*Anthemis nobilis*) flower extract, rosemary (*Rosmarinus officinalis*) leaf oil, eucalyptus (*Eucalyptus globulus*) leaf oil, glycerin, carrageenan, yeast polysaccharides, panthenol, allantoin, sodium PCA, PPG-2 isoceteth-20 acetate, PEG-12 dimethicone, carbomer, triethanolamine, butylene glycol, polysorbate 20, disodium EDTA, phenoxyethanol, caprylyl glycol, ethylhexylglycerin, hexylene glycol, propylene glycol, and citric acid.

4Life Transfer Factor Tri-Factor

Formula: 4Life Tri-Factor Formula (UltraFactor, OvoFactor, and NanoFactor).

4Life Transfer Factor Immune Boost:

Vitamin C (as ascorbic acid, ascorbyl palmitate, erythorbic acid, and ascorbigen), 4Life Transfer Factor Tri-Factor Formula (UltraFactor, OvoFactor, and NanoFactor), sodium, calcium (as calcium carbonate), magnesium (as magnesium carbonate), zinc (as zinc oxide), vitamin B6 (as pyridoxal-5-phosphate), riboflavin (as riboflavin-5-phosphate), vitamin D (as cholecalciferol), vitamin K (as vitamin K2 menaquinone-7), sucrose, tangerine (flavor and color), citric acid, natural flavors, beta carotene (color), salt, sodium bicarbonate, monk fruit extract, stevia, and beet root (color).

4LIFETRANSFORM

4LifeTransform Burn: Proprietary 4LifeTransform Burn Blend [bitter orange with other citrus (citrus spp.) fruits extract, *Coleus forskohlii* root extract, African mango (*Irvingia gabonensis*) seed extract, and dihydrocapsiate].

4LifeTransform Man: Performance Blend [l-citrulline, citrus peel extract, and Korean ginseng (*Panax ginseng*) root extract].

4LifeTransform Woman: Woman Performance Blend [l-citrulline, evening primrose (*Oenothera biennis*) defatted seed extract, and velvet bean (*Mucuna pruriens*) seed extract].

Pro-TF Chocolate and Vanilla Cream:

4LifeTransform Protein Formula Low Molecular Weight Pro-TF Protein Blend,

extensively hydrolyzed whey protein concentrate, extensively hydrolyzed egg white protein, low-glycemic maltodextrin, cocoa powder, natural chocolate and vanilla cream flavors, medium chain triglyceride (MCT) oil powder, sucralose, acesulfame-potassium (Ace-K), and 4Life Tri-Factor Formula [UltraFactor (ultra-filtered colostrum powder), OvoFactor (egg yolk powder), and NanoFactor (nano-filtered colostrum powder)].

4LifeTransform PreZoom: Carnosyn® (beta-Alanine), sodium bicarbonate, potassium bicarbonate, creatine, betaine HCL, BCAA 2:1:1, l-glutamine, l-citrulline, l-tyrosine, green tea leaf extract, l-theanine, 4Life Tri-Factor Formula (UltraFactor, OvoFactor, and NanoFactor), acesulfame potassium, summer red color, watermelon flavor, maltodextrin, and sucralose.

4Life Transfer Factor Renuvo: 4Life Tri-Factor Formula (UltraFactor, OvoFactor, and NanoFactor) and 4Life Adaptogenics Blend (*Rhaponticum carthamoides* root extract, *Schisandra chinensis* fruit extract, ALCAR, green tea leaf extract, ashwagandha root extract, turmeric rhizome extract, resveratrol, and black pepper fruit extract).

ShapeRite: Chitosan (from shellfish), white kidney (*Phaseolus vulgaris*) bean extract, hydrolyzed yeast (*Saccharomyces cerevisiae*) extract, dragon fruit (*Hylocereus undulatus Britt*) extract, dicalcium phosphate, and vegetable capsule.

4LifeTransform Protein Bar: Protein Blend [soy protein crisps (soy protein isolate, tapioca starch, and salt), hydrolyzed collagen, whey protein isolate, milk protein isolate, soy

protein isolate, and 4Life Transfer Factor (bovine colostrum and egg yolk powder)], chocolate flavored coating [sugar, fractionated palm kernel oil, nonfat dry milk, cocoa powder, whole milk powder, cocoa powder (processed with alkali), soy lecithin, natural flavor, and salt], corn syrup, peanut butter, polydextrose, caramel filling (maltitol syrup, fractionated palm oil, water, skim milk powder, butter, sodium citrate, soy lecithin, sodium bicarbonate, calcium chloride, salt, and vanillin), glycerin, organic evaporated cane juice, peanuts, natural flavors, peanut flour, salt, and mixed tocopherols.

TARGETED TRANSFER FACTOR

4Life Transfer Factor AgePro:

Nicotinamide mononucleotide, apigenin, quercetin dihydrate, white button mushroom powdered extract, alpha-ketoglutaric acid, colostrum filtrate, NanoFactor, OvoFactor, and magnesium stearate.

4Life NanoFactor Glutamine Prime:

L-glutamine and Immune Energy Blend (l-arginine, n-acetyl-l-cysteine, alpha lipoic acid, l-alanyl-l-glutamine, and NanoFactor).

4Life Transfer Factor Belle Vie:

4Life Tri-Factor Formula (UltraFactor, OvoFactor, and NanoFactor), Antioxidant Proprietary Blend (green tea leaf extract and grapeseed extract), Phytoestrogen Proprietary Blend (flaxseed extract, kudzu root extract, and red clover plant extract), and Cruciferous Proprietary Blend (broccoli, cabbage, kale—containing indole-3-carbinol, diindolyl methane, ascorbigen, and calcium d-glucarate).

4Life Transfer Factor Cardio:

Microcrystalline cellulose, garlic bulb extract,

magnesium oxide powder, coenzyme Q10, red rice yeast extract, colostrum filtrate, magnesium glycinate, selenomethionine, ginkgo biloba leaf extract, OvoFactor, magnesium stearate, *Polygonum cospidatum* root extract, silicon dioxide, vitamin B6 pyridoxine hydrochloride, NanoFactor, vitamin B12, and folic acid (vitamin B9).

4Life Transfer Factor Collagen: Vitamin A (as vitamin A acetate), vitamin C (as ascorbic acid), vitamin E (as d-alpha-tocopherol acetate), biotin, 4Life Tri-Factor Formula (UltraFactor, OvoFactor, and NanoFactor), Age-Defying Collagen Complex [hydrolyzed fish collagen (source of type I collagen), chicken bone broth collagen (source of type I, II, and III collagen), and eggshell membrane collagen (source of type I, V, and X collagen)], Age-Defying Plant Complex [wheat (*Triticum aestivum*) seed extract and astaxanthin microalgae extract (*Haematococcus pluvialis*)], cane sugar, natural flavor, maltodextrin, malic acid, citric acid, salt, reb A, and sodium acetate.

4Life Transfer Factor Collagen Type I:

Hydrolyzed collagen (fish), 4Life Tri-Factor Formula (UltraFactor, OvoFactor, and NanoFactor), vitamin E (d-alpha-tocopherol acetate), vitamin C (ascorbic acid 99%), sucrose, salt (sodium chloride), natural vanilla peppermint flavor, and maltodextrin.

4Life Transfer Factor Glucoach:

Chromium, 4Life Transfer Factor Blend (UltraFactor and OvoFactor), vanadium, alpha lipoic acid, and Proprietary Blend (*Pterocarpus marsupium* heart wood extract, gymnema leaf extract, fenugreek seed extract, *Momordica charantia* fruit extract, and Korean ginseng root extract).

4Life Transfer Factor KBU: 4Life Tri-Factor Formula (UltraFactor, OvoFactor, and NanoFactor), Bladder Support Blend (cranberry fruit powder and extract, d-mannose, blueberry fruit, and lingonberry fruit), Kidney Support Blend (IP-6, *Chanca piedra* herb, juniper berry, dandelion leaf, and varuna stem bark extract), and pH Balancing Blend (apple cider vinegar, sodium bicarbonate, potassium bicarbonate, and calcium carbonate).

4Life Transfer Factor MalePro: Zinc, selenium, 4Life Tri-Factor Formula (UltraFactor, OvoFactor, and NanoFactor), saw palmetto fruit extract, lycopene, and Proprietary Blend (nettle root extract, kudzu root extract, soy bean extract, broccoli whole plant extract, and calcium d-glucarate).

4Life Transfer Factor Metabolite: Post-Meal Metabolism Blend [grape (*Vitis vinifera*) fruit and seed extracts, aronia (*Aronia melanocarpa*) fruit extract, pomegranate (*Punica granatum*) fruit extract, olive (*Olea europaea*) leaf extract, grapefruit (*Citrus paradisi*) fruit extract, and cranberry (*Vaccinium macrocarpon*) fruit extract], 4Life Tri-Factor Formula (UltraFactor, OvoFactor, and NanoFactor), iodine [from kelp (*Laminaria digitata*)], Proprietary Metabolic Blend (hydroxycinnamic acid and quercetin), and selenium (as selenomethionine).

4Life Transfer Factor ReCall: Magnesium, 4Life Tri-Factor Formula (UltraFactor, OvoFactor, and NanoFactor), and Proprietary Blend [soy seed extracts, lemon balm herb extract, aerial parts (*Bacopa monnieri*) extract, n-acetyl-l-tyrosine, n-acetyl-l-cysteine, ginkgo biloba leaf extract, and *Huperzia serrata* herb extract].

4Life Transfer Factor Reflexion: 4Life Tri-Factor Formula (UltraFactor, OvoFactor, and NanoFactor) and Proprietary Blend [wild green oat (*Avena sativa*) extract and l-theanine].

4Life Transfer Factor Vista: Vitamin A, vitamin C, vitamin E, zinc, 4Life Tri-Factor Formula (UltraFactor, OvoFactor, and NanoFactor), lutein, zeaxanthin, and Ocular Health Proprietary Blend (*Haematococcus pluvialis* microalgae extract, bilberry fruit extract, *Spirulina microalgae*, citrus bioflavonoids peel extract, black currant fruit extract, ginkgo biloba leaf extract, blackberry fruit extract, and ascorbigen).

4Life Transfer Factor SleepRite: GABA (gamma-aminobutyric acid), 4Life Transfer Factor Tri-Factor Formula (UltraFactor, OvoFactor, and NanoFactor), Relax Blend [ashwagandha (*Withania somnifera*) root extract, lavandin (*Lavandula hybrida*) oil, and lavender (*Lavandula angustifolia*) oil], magnesium (as magnesium oxide and glycinate), vitamin B6 (as pyridoxal 5'-phosphate), melatonin (sustained-release), gelatin capsule, palm oil, hydroxypropyl methylcellulose, and sunflower lecithin.

4Life Transfer Factor Lung: Vitamin A (as beta carotene), vitamin C, vitamin E (as d-alpha-tocopherol), 4Life Tri-Factor Formula (UltraFactor, OvoFactor, and NanoFactor), and Lung Detox Blend [thyme (*Thymus vulgaris*) leaf/flower extract, Korean ginseng (*Panax ginseng*) root extract, broccoli (*Brassica oleracea*) seed extract, n-acetyl-l-cysteine, black cumin (*Nigella sativa*) seed extract, citrus (*Citrus* spp.) fruit/peel extract, bilberry (*Vaccinium myrtillus*) fruit extract, and mustard (*Brassica hirta*) seed extract].

DIGEST4LIFE

Aloe Vera Stix: Aloe vera gel concentrate, ascorbic acid, ethanol, erythorbic acid, sodium benzoate, potassium sorbate, and monoglycerides.

Fibre System Plus: Fiber Blend (psyllium husk, rice seed bran, apple fruit fiber, slippery elm inner bark, prune fruit, marshmallow root, locust bean gum, and xanthan gum), Cleansing Blend (black walnut hull, cascara sagrada bark, gentian root, licorice root, and buckthorn bark), Nutrition Blend (cranberry fruit, pineapple fruit, papaya fruit, sage leaf, parsley leaf, Irish moss whole plant, bee pollen, and spirulina), and Herbal Blend (ginger root, hops flower, and chamomile flower).

Digestive Enzymes: Proprietary Enzyme Blend (amylase, protease 4.5, glucosamylase, acid maltase, α -galactosidase, pectinase, cellulase, peptidase, protease 3.0, bromelain, lipase, invertase, hemicellulase, β -glucanase, xylanase, and papain).

Pre/o Biotics: 4Life Tri-Factor Formula (UltraFactor, OvoFactor, and NanoFactor), Probiotics [*Bifidobacterium longum* (BB536), *Bifidobacterium lactis* (BI-04), *Bifidobacterium infantis* (M-63), *Lactobacillus rhamnosus* (Lr-32), and *Lactobacillus acidophilus* (NCFM)], and Prebiotic Blend [Galactooligosaccharides (GOS), Xylooligosaccharides (XOS), and Fructooligosaccharide (FOS)].

Super Detox: Detox Proprietary Blend (red clover flower tops, milk thistle fruit extract, calcium d-glucarate, broccoli stalks/florets extract, bupleurum root extract, n-acetyl-L-cysteine, and artichoke leaf).

Tea4Life: Proprietary Blend (senna leaf, stevia leaf, cinnamon bark, buckthorn bark, ginger root, orange peel, green tea leaf, echinacea aerial parts, rooibos branch and leaf, astragalus root, and bitter orange fruit).

PhytoLax: Laxative Blend [Rhubarb (*Rhueum palmatum*) rhizome and root extract, ginger (*Zingiber officinale*) root, cascara sagrada (*Rhamnus purshiana*) bark extract, buckthorn (*Rhamnus frangula*) bark extract, black walnut (*Juglans nigra*) hull, and senna (*Cassia senna*) leaf extract] and vegetable capsule.

ākWā SKINCARE

Oil-to-Foam Cleanser: Water, glycerin, dipropylene glycol, coco-betaine, coco-glucoside, acrylates copolymer, polyglyceryl-10 laurate, sodium methyl cocoyl taurate, 1,2-hexanediol, *Camellia sinensis* leaf water, sea water, rice ferment filtrate (sake), pumpkin (*Cucurbita pepo*) fruit extract, saccharomyces ferment, bioflavonoids, broccoli (*Brassica oleracea italica*) extract, *Aloe barbadensis* leaf extract, sunflower (*Helianthus annuus*) seed oil, olive (*Olea europaea*) fruit oil, *Geranium maculatum* oil, bergamot (*Citrus aurantium bergamia*) fruit oil, *Cymbopogon martinii* oil, lavender (*Lavandula angustifolia*) oil, *Citrus junos* fruit extract, *Pinus densiflora* leaf extract, *Geranium maculatum nobilis* flower oil, *Artemisia annua* extract, orange (*Citrus aurantium dulcis*) peel oil, ethylhexylglycerin, potassium cocoyl glycinate, sodium chloride, tromethamine, potassium cocoate, propanediol, caprylic/capric triglyceride, disodium EDTA, sodium lauryl glycol carboxylate, caprylyl glycol, and butylene glycol.

Four-Way Toner: *Camellia sinensis* leaf water, isopentyl diol, glycerin, butylene

glycol, 1,2-hexanediol, niacinamide, water, saccharomyces ferment, *Rosa damascena* flower water, adenosine, *Undaria pinnatifida* extract, *Laminaria japonica* extract, *Hizikia fusiforme* extract, *Centella asiatica* extract, licorice (*Glycyrrhiza glabra*) root extract, *Camellia sinensis* leaf extract, rosemary (*Rosmarinus officinalis*) leaf extract, matricaria (*Chamomilla recutita*) flower extract, *Scutellaria baicalensis* root extract, *Polygonum cuspidatum* root extract, *Camellia japonica* flower extract, *Andrographis paniculata* extract, *Morus nigra* fruit extract, allantoin, *Citrus unshiu* peel extract, ethylhexylglycerin, propanediol, betaine, and disodium EDTA.

Vitamin Essence: *Camellia sinensis* leaf water, isopentyl diol, butylene glycol, dipropylene glycol, cetyl ethylhexanoate, methyl gluceth-20, niacinamide, 1,2-hexanediol, polyglyceryl-3 distearate, octyldodecanol, water, saccharomyces ferment, adenosine, ascorbyl glucoside, saccharomyces lysate extract, sugar maple (*Acer saccharum*) extract, *Centella asiatica* extract, licorice (*Glycyrrhiza glabra*) root extract, *Scutellaria baicalensis* root extract, rosemary (*Rosmarinus officinalis*) leaf extract, *Camellia sinensis* leaf extract, *Camellia japonica* flower extract, arginine, allantoin, panthenol, *Citrus unshiu* peel extract, *Morus nigra* fruit extract, *Cymbopogon martinii* oil, lavender (*Lavandula angustifolia*) oil, *Anthemis nobilis* flower oil, matricaria (*Chamomilla recutita*) flower extract, *Geranium maculatum* oil, *Polygonum cuspidatum* root extract, *Andrographis paniculata* extract, bergamot (*Citrus aurantium bergamia*) fruit oil, orange (*Citrus aurantium dulcis*) peel oil, betaine, ethylhexylglycerin, glyceryl stearate citrate, carbomer, propanediol, and caprylyl glycol.

Eye Cream: *Camellia sinensis* leaf water, glycerin, butylene glycol, hydrogenated polydecene, caprylic/capric triglyceride, polyglyceryl-3 distearate, 1,2-hexanediol, cetearyl alcohol, niacinamide, olive (*Olea europaea*) fruit oil, water, shea (*Butyrospermum parkii*) butter, mushroom (*Tremella fuciformis*) extract, sodium hyaluronate, saccharomyces ferment, ascorbyl glucoside, adenosine, cucumber (*Cucumis sativus*) extract, *Bambusa arundinacea* juice, *Centella asiatica* extract, *Camellia sinensis* leaf extract, *Anthemis nobilis* flower oil, *Polygonum cuspidatum* root extract, licorice (*Glycyrrhiza glabra*) root extract, rosemary (*Rosmarinus officinalis*) leaf extract, *Scutellaria baicalensis* root extract, *Camellia japonica* flower extract, *Morus nigra* fruit extract, *Citrus unshiu* peel extract, lavender (*Lavandula angustifolia*) oil, *Andrographis paniculata* extract, bergamot (*Citrus aurantium bergamia*) fruit oil, *Geranium maculatum* oil, orange (*Citrus aurantium dulcis*) peel oil, *Cymbopogon martinii* oil, matricaria (*Chamomilla recutita*) flower extract, betaine, glyceryl stearate, glyceryl stearate citrate, ethylhexylglycerin, sorbitan isostearate, disodium EDTA, propanediol, behenyl alcohol, polyglyceryl-3 methylglucose distearate, ammonium acryloyldimethyltaurate/VP copolymer, hydroxyethylacrylate/sodium acryloyldimethyl taurate copolymer, and caprylyl glycol.

Volcanic Mud Mask: *Camellia sinensis* leaf water, kaolin, glycerin, bentonite, butylene glycol, magnesium aluminum silicate, charcoal powder, 1,2-hexanediol, volcanic ash, *Coix lacryma-jobi* Ma-yuen seed extract, apricot (*Prunus armeniaca*) seed powder, walnut (*Juglans regia*) shell powder, soybean (*Glycine max*) seed extract, bioflavonoids, *Aloe barbadensis* leaf extract, rice

(*Oryza sativa*) extract, rice (*Oryza sativa*) bran extract, sesame (*Sesamum indicum*) seed extract, *Geranium maculatum* oil, oat (*Avena sativa*) kernel extract, *Pinus densiflora* leaf extract, *Citrus junos* fruit extract, *Artemisia annua* extract, lavender (*Lavandula angustifolia*) oil, bergamot (*Citrus aurantium bergamia*) fruit oil, saccharomyces ferment, *Cymbopogon martinii* oil, broccoli (*Brassica oleracea*) extract, *Phaseolus radiatus* seed extract, *Anthemis nobilis* flower oil, silica, water, xanthan gum, orange (*Citrus aurantium dulcis*) peel oil, ethylhexylglycerin, propanediol, disodium EDTA, hydroxyacetophenone, C12-14 pareth-12, caprylyl glycol, pentylene glycol, and dipropylene glycol.

Moisture Cream: *Camellia sinensis* leaf water, water, butylene glycol, cetyl ethylhexanoate, octyldodecanol, glycerin, cetyl alcohol, phytosteryl isostearyl dimer dilinoleate, polyglyceryl-3 methylglucose distearate, jojoba (*Simmondsia chinensis*) seed oil, niacinamide, hydrogenated vegetable oil, beeswax, 1,2-hexanediol, *Panax ginseng* root extract, adenosine, *Centella asiatica* extract, sodium hyaluronate, saccharomyces ferment, honey extract, *Andrographis paniculata* extract, *Betula platyphylla japonica* juice, *Scutellaria baicalensis* root extract, panthenol, *Polygonum cuspidatum* root extract, *Camellia sinensis* leaf extract, licorice (*Glycyrrhiza glabra*) root extract, rosemary (*Rosmarinus officinalis*) leaf extract, *Anthemis nobilis* flower oil, *Morus nigra* fruit extract, matricaria (*Chamomilla recutita*) flower extract, *Citrus unshiu* peel extract, bergamot (*Citrus aurantium bergamia*) fruit oil, lavender (*Lavandula angustifolia*) oil, *Camellia japonica* flower extract, *Cymbopogon martinii* oil, *Geranium*

maculatum, orange (*Citrus aurantium dulcis*) peel oil, hydroxyacetophenone, glyceryl stearate, caprylic/capric triglyceride, disodium EDTA, ethylhexylglycerin, microcrystalline wax, glyceryl stearate SE, ammonium acryloyldimethyltaurate/VP copolymer, propanediol, bis-diglycerol polyacryladipate-2, caprylyl glycol, pentylene glycol, and dipropylene glycol.

Sheet Mask: Water, glycerin, butylene glycol, niacinamide, lactobacillus/milk ferment filtrate, adenosine, hyaluronic acid, sodium hyaluronate, sodium hyaluronate crosspolymer, hydrolyzed hyaluronic acid, hydrolyzed sodium hyaluronate, colostrum, dried egg yolk, *Camellia sinensis* leaf extract, licorice (*Glycyrrhiza glabra*) root extract, dipotassium glycyrrhizate, panthenol, ginger (*Zingiber officinale*) root extract, *Coptis chinensis* root extract, allantoin, arginine, lemon (*Citrus limon*) fruit extract, mandarin orange (*Citrus nobilis*) oil, *Eucalyptus globulus* leaf oil, *Geranium maculatum* oil, lavender (*Lavandula angustifolia*) oil, *Pinus palustris* oil, trehalose, ethylhexylglycerin, carbomer, hydroxyethylcellulose, 1,2-hexanediol, disodium EDTA, PEG-60 hydrogenated castor oil, and pentylene glycol.

SPF 30

Moisturizing Sunscreen: Active ingredients: Homosalate, zinc oxide, and octisalate. Inactive ingredients: Water, butyloctyl salicylate, coco-caprylate/caprate, glycerin, glyceryl stearate, PEG-100 stearate, dimethicone, C14-22 alkane, isododecane, caprylic/capric triglyceride, acrylates/polytrimethylsiloxy methacrylate copolymer, hydroxyapatite, C12-20 alkyl glucoside, cetearyl glucoside, tocopherol, tocopheryl acetate, tetrahexyldecyl ascorbate, triolein, linoleic acid,

oleic acid, palmitic acid, stearic acid, bisabolol, phytosteryl canola glycerides, lecithin, xanthan gum, citric acid, biosaccharide gum-4, phenyl trimethicone, caprylyl glycol, polyglyceryl-3 polyricinoleate, disteardimonium hectorite, isostearic acid, disodium EDTA, 1,2 hexanediol, benzyl alcohol, benzoic acid, vinyl dimethicone/methicone silsesquioxane crosspolymer, ammonium acryloyldimethyltaurate/VP copolymer, propylene carbonate, fragrance, sodium olivoyl glutamate, glucose, farnesol, cetyl alcohol, stearyl alcohol, ethylhexylglycerin, phenoxyethanol, and propylene glycol.

ENERGY

Energy Go Stix—Berry, Orange Citrus, Pink Lemonade, Kiwi Strawberry, and Tropical: 4Life Transfer Factor Blend (UltraFactor and OvoFactor), Amino Acid Blend (l-glutamine, l-arginine, taurine, creatine, l-carnitine, l-omithine, and α -ketoglutarate), Proprietary Blend (eleuthero root extract, Korean ginseng plant extract, and American ginseng root extract), Herbal Energy Blend (green tea leaf extract, yerba mate leaf extract, guarana root extract, maca root extract, and Rhodiola rosea root extract), maltodextrin, natural orange flavor, citric acid, silicon dioxide, beta carotene (color), acesulfame K, sucralose, natural pineapple flavor, and salt.

4LIFE FUNDAMENTALS

BioGenistein Ultra: Hormone Balance Blend (soy seed extract, black cohosh root extract, dong quai root extract, chaste tree fruit extract, and turmeric rhizome extract) and Proprietary Female Blend (magnolia bark extract, eleuthero root extract, quercetin, and l-theanine).

Cal-Mag Complex: Vitamin C, vitamin D, vitamin K, vitamin B6, calcium, magnesium, zinc, copper, manganese, and Proprietary Blend (boron glycinate, l-histidine, soy lecithin, horsetail aerial parts, and strontium chloride).

Essential Fatty Acid Complex: Fish Oil Blend (with 500 mg EPA and DHA) and Plant Oil Blend [flaxseed oil (alpha linolenic acid), borage seed oil (gamma linolenic acid), and safflower seed oil (conjugated linoleic acid)].

Fibro AMJ Day-Time Formula:

Vitamin B6, magnesium, Proprietary Joint Blend (glucosamine hydrochloride, methylsulfonylmethane, bovine cartilage powder, *Boswellia serrata* tree resin extract, bromelain, and devil's claw root extract), and Antioxidant Blend (malic acid, n-acetyl-l-cysteine, l-cysteine, grapeseed extract, and alpha lipoic acid).

Flex4Life (capsules): Joint Support Blend [avocado (*Persea americana*) fruit/soy, *Glycine max* seed extracts, and hyaluronic acid] and Mobility Support Blend [*Terminalia chebula* fruit extract, bromelain and trypsin enzymes, turmeric (*Curcuma longa*) root extracts, *Boswellia serrata* gum extract, and black pepper (*Piper nigrum*) fruit extract].

Fortified Colostrum: Colostrum powder, lactoferrin, oligosaccharides, alpha lactalbumin, casein glycomacropeptide, high fat whey protein concentrate (MFGM), and silicon dioxide.

Gurmar: Gymnema leaf and gymnema leaf extract.

Life C Chewable: Vitamin C (as calcium ascorbate, ascorbic acid, dehydroascorbic acid,

erythorbic acid, magnesium ascorbate, ascorbyl palmitate, and ascorbigen).

Multiplex: Vitamin A, vitamin C, vitamin D, vitamin E, thiamin, riboflavin, niacin, vitamin B6, folic acid, vitamin B12, biotin, pantothenic acid, calcium, iron, iodine, magnesium, zinc, selenium, copper, manganese, chromium, and Proprietary Blend (citrus bioflavonoid fruit complex, spirulina, para-aminobenzoic acid, and rose hips fruit).

MusculoSkeletal Formula: Alfalfa aerial parts powder, gotu kola leaf extract, devil's claw root extract, ginger rhizome powder, turmeric rhizome extract, and saw palmetto fruit extract.

Stress Formula: Proprietary Blend (peppermint leaf, chamomile flower, passion flower, *Ginkgo biloba* leaf, linden flower, lemon balm leaf, and valerian root) and Stress Proprietary Extract Blend (chamomile flower extract, *Ginkgo biloba* leaf extract, hops flower extract, peppermint leaf extract, passion flower herb extract, and valerian root extract).

RIOVIDA PRODUCTS

4Life Transfer Factor RioVida Tri-Factor Formula: Vitamin C, 4Life Tri-Factor Formula (UltraFactor, OvoFactor, and NanoFactor), and RioVida Juice Blend (apple, purple grape, blueberry, açai, pomegranate, and elderberry juices from concentrate).

4Life Transfer Factor RioVida Burst Tri-Factor Formula: 4Life Tri-Factor Formula (UltraFactor, OvoFactor, and NanoFactor) and RioVida Juice Blend (apple, purple grape, blueberry, açai, pomegranate, and elderberry juices from concentrate).

4Life Transfer Factor RioVida Chews Tri-Factor Formula: Vitamin C, 4Life Tri-Factor Formula (UltraFactor, OvoFactor, and NanoFactor), and RioVida Juice Blend (apple, purple grape, blueberry, açai, pomegranate, and elderberry juices from concentrate).

4Life Transfer Factor RioVida Stix Tri-Factor Formula: 4Life Tri-Factor Formula (UltraFactor, OvoFactor, and NanoFactor) and RioVida Proprietary Blend (açai, blueberry, elderberry fruit powder, grapeseed extract, and pomegranate hull extract).

RITESTART PRODUCTS

NutraStart Blue Vanilla: Calcium (as dicalcium phosphate), sodium, magnesium (as magnesium oxide), potassium, 4Life Transfer Factor Tri-Factor Formula (UltraFactor, OvoFactor, and NanoFactor), vitamin C (as ascorbic acid), protein, iron (as ferric citrate), niacin (as niacinamide), vitamin E (as d-alpha tocopheryl acetate), zinc (zinc oxide), pantothenic acid (as d-calcium pantothenate), vitamin B6 (as pyridoxine HCL), riboflavin, thiamin (as thiamine mononitrate), copper (as copper gluconate), vitamin A (as vitamin A palmitate), folate (as 82 mcg folic acid), iodine (as potassium iodide), biotin, vitamin D (as cholecalciferol), vitamin B12 (as cyanocobalamin), whey protein concentrate, sunflower oil powder (sunflower oil, maltodextrin, sodium caseinate, mono- and diglycerides, tocopherols, and tricalcium phosphate), modified food starch, soluble corn fiber, organic cane sugar, natural flavors, honey powder, apple fiber, hydrolyzed guar gum, oat fiber, xanthan gum, chia seed protein, sea salt, wheatgrass (*Triticum aestivum*) young leaves,

blue spirulina, stevia, immune peptides from whey, and hibiscus extract.

RiteStart: Vitamin C, vitamin D, vitamin E, vitamin K2, thiamin, riboflavin, niacin, vitamin B6, vitamin B12, biotin, pantothenic acid, calcium, iron, iodine, magnesium, zinc, selenium, copper, manganese, chromium, molybdenum, boron, vanadium, 4Life Transfer Factor Plus Tri-Factor Formula, Essential Fatty Acid Complex, Proprietary OPC Blend (grapeseed extract and pinebark extract), Proprietary Antioxidant Blend (rutin, marigold petals extract, green tea leaf extract, alpha lipoic acid, coenzyme Q10, and bilberry fruit extract), and Proprietary Support Blend (glucosamine hydrochloride, calcium d-glucarate, n-acetyl-L-cysteine, hydrolyzed collagen powder, and *Ginkgo biloba* leaf extract).

RiteStart Men also includes: Men's Health Blend (turmeric root extract, broccoli sprout extract, tomato fruit extract, soya bean seed extract, and diindolylmethane).

RiteStart Women also includes: Women's Health Blend (ipriflavone, turmeric, soya bean seed extract, broccoli sprout extract, and diindolylmethane).


RiteStart Kids & Teens: Vitamin C, vitamin D, vitamin E, vitamin K, thiamin, riboflavin, niacin (as niacinamide), vitamin B6, folate, vitamin B12, biotin, pantothenic acid, calcium, iron, iodine, magnesium, zinc, selenium, copper, manganese, chromium, and 4Life Tri-Factor Formula (UltraFactor, OvoFactor, and NanoFactor).

4LifeELEMENTS

Zinc Factor: Zinc (6 ppm), Silver (12 ppm).

Gold Factor: Gold (6 ppm).

Note: For ingredient listings for 4Life Fortify and ennumi Personal Care, please visit 4Life.com.



Enhance your
immune system;
enhance your life!*

*THESE STATEMENTS HAVE NOT BEEN EVALUATED BY THE FOOD AND DRUG ADMINISTRATION.
THESE PRODUCTS ARE NOT INTENDED TO DIAGNOSE, TREAT, CURE, OR PREVENT ANY DISEASE.



4Life Transfer Factor
is clinically proven to
activate the immune
system within
two hours.*1



*This statement has not been evaluated by the Food and Drug Administration. These products are not intended to diagnose, treat, cure, or prevent any disease.
1. Clinical study on the rapid immune modulating effects of 600 mg of 4Life Transfer Factor Blend compared to placebo. G. Jensen, NIS Labs Report 058-006.

For more information about 4Life products and the business opportunity, contact:



C/D/R ENG V020824ENG Item #90350 ©2024 4Life Trademarks, LLC. All Rights Reserved.
U.S. distribution only

